

PLAT of SURVEY

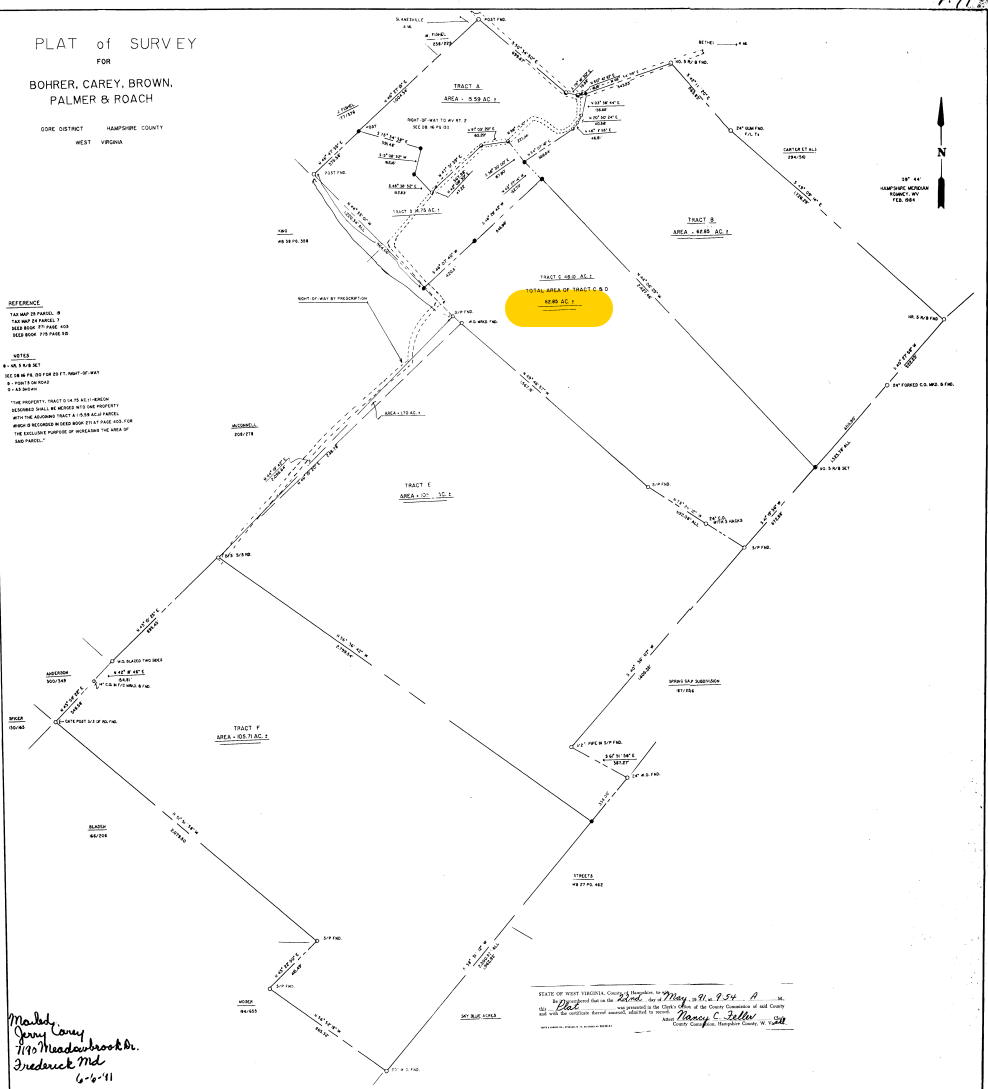
FOR  
BOHRER, CAREY, BROWN,  
PALMER & ROACH

CORE DISTRICT HAMPSHIRE COUNTY  
WEST VIRGINIA

REFERENCE  
 THE MAP OF PARCEL 9  
 AND MAP OF PARCEL 10  
 MADE BY F. F. HARRIS, 1908  
 REEL 806, P. 178 PAGE 30

NOTES  
 1. IN A 1/4 AC. 1/4  
 2. IN A 1/4 AC. 1/4  
 3. IN A 1/4 AC. 1/4  
 4. IN A 1/4 AC. 1/4  
 5. IN A 1/4 AC. 1/4  
 6. IN A 1/4 AC. 1/4  
 7. IN A 1/4 AC. 1/4  
 8. IN A 1/4 AC. 1/4  
 9. IN A 1/4 AC. 1/4  
 10. IN A 1/4 AC. 1/4  
 11. IN A 1/4 AC. 1/4  
 12. IN A 1/4 AC. 1/4  
 13. IN A 1/4 AC. 1/4  
 14. IN A 1/4 AC. 1/4  
 15. IN A 1/4 AC. 1/4  
 16. IN A 1/4 AC. 1/4  
 17. IN A 1/4 AC. 1/4  
 18. IN A 1/4 AC. 1/4  
 19. IN A 1/4 AC. 1/4  
 20. IN A 1/4 AC. 1/4  
 21. IN A 1/4 AC. 1/4  
 22. IN A 1/4 AC. 1/4  
 23. IN A 1/4 AC. 1/4  
 24. IN A 1/4 AC. 1/4  
 25. IN A 1/4 AC. 1/4  
 26. IN A 1/4 AC. 1/4  
 27. IN A 1/4 AC. 1/4  
 28. IN A 1/4 AC. 1/4  
 29. IN A 1/4 AC. 1/4  
 30. IN A 1/4 AC. 1/4  
 31. IN A 1/4 AC. 1/4  
 32. IN A 1/4 AC. 1/4  
 33. IN A 1/4 AC. 1/4  
 34. IN A 1/4 AC. 1/4  
 35. IN A 1/4 AC. 1/4  
 36. IN A 1/4 AC. 1/4  
 37. IN A 1/4 AC. 1/4  
 38. IN A 1/4 AC. 1/4  
 39. IN A 1/4 AC. 1/4  
 40. IN A 1/4 AC. 1/4  
 41. IN A 1/4 AC. 1/4  
 42. IN A 1/4 AC. 1/4  
 43. IN A 1/4 AC. 1/4  
 44. IN A 1/4 AC. 1/4  
 45. IN A 1/4 AC. 1/4  
 46. IN A 1/4 AC. 1/4  
 47. IN A 1/4 AC. 1/4  
 48. IN A 1/4 AC. 1/4  
 49. IN A 1/4 AC. 1/4  
 50. IN A 1/4 AC. 1/4  
 51. IN A 1/4 AC. 1/4  
 52. IN A 1/4 AC. 1/4  
 53. IN A 1/4 AC. 1/4  
 54. IN A 1/4 AC. 1/4  
 55. IN A 1/4 AC. 1/4  
 56. IN A 1/4 AC. 1/4  
 57. IN A 1/4 AC. 1/4  
 58. IN A 1/4 AC. 1/4  
 59. IN A 1/4 AC. 1/4  
 60. IN A 1/4 AC. 1/4  
 61. IN A 1/4 AC. 1/4  
 62. IN A 1/4 AC. 1/4  
 63. IN A 1/4 AC. 1/4  
 64. IN A 1/4 AC. 1/4  
 65. IN A 1/4 AC. 1/4  
 66. IN A 1/4 AC. 1/4  
 67. IN A 1/4 AC. 1/4  
 68. IN A 1/4 AC. 1/4  
 69. IN A 1/4 AC. 1/4  
 70. IN A 1/4 AC. 1/4  
 71. IN A 1/4 AC. 1/4  
 72. IN A 1/4 AC. 1/4  
 73. IN A 1/4 AC. 1/4  
 74. IN A 1/4 AC. 1/4  
 75. IN A 1/4 AC. 1/4  
 76. IN A 1/4 AC. 1/4  
 77. IN A 1/4 AC. 1/4  
 78. IN A 1/4 AC. 1/4  
 79. IN A 1/4 AC. 1/4  
 80. IN A 1/4 AC. 1/4  
 81. IN A 1/4 AC. 1/4  
 82. IN A 1/4 AC. 1/4  
 83. IN A 1/4 AC. 1/4  
 84. IN A 1/4 AC. 1/4  
 85. IN A 1/4 AC. 1/4  
 86. IN A 1/4 AC. 1/4  
 87. IN A 1/4 AC. 1/4  
 88. IN A 1/4 AC. 1/4  
 89. IN A 1/4 AC. 1/4  
 90. IN A 1/4 AC. 1/4  
 91. IN A 1/4 AC. 1/4  
 92. IN A 1/4 AC. 1/4  
 93. IN A 1/4 AC. 1/4  
 94. IN A 1/4 AC. 1/4  
 95. IN A 1/4 AC. 1/4  
 96. IN A 1/4 AC. 1/4  
 97. IN A 1/4 AC. 1/4  
 98. IN A 1/4 AC. 1/4  
 99. IN A 1/4 AC. 1/4  
 100. IN A 1/4 AC. 1/4

*Map by  
 J. W. Carey  
 715 Meadowbrook Dr.  
 Frederick Md.  
 6-6-11*



STATE OF WEST VIRGINIA County of Hampshire, ss. *May 21, 1954*  
 I, *John C. Kelly*, Clerk of the County Commission of said County  
 do hereby certify that the within and foregoing plat, map and return  
 was duly filed for record in my office on the *21st* day of *May*, 1954.

JOHN C. KELLY CLERK OF THE COUNTY COMMISSION HAMPSHIRE COUNTY, WEST VIRGINIA	F. F. HARRIS & ASSOCIATES LICENSED LAND SURVEYORS 1000 N. 10TH ST. - 1ST FLOOR - FREDERICK, MD. F. F. HARRIS FREDERICK, MD.
--	---