

**PLAT OF SURVEY FOR WV HUNTER, LLC**  
 Quail Creek Farm  
 471 B & O Overcross Rd., Hedgesville, WV 25427  
 304-262-2770  
**Ashby Forest**  
 Lots 1-30  
 1.5 Miles North of Springfield  
 Springfield Dist., Hampshire Co., WV  
 Being part of the land from Meadowbrook Corp. to WV Hunter, LLC known as the Bickner Tract With Reference to Deed Book 438 Page 638 Dated September 23, 2004 and the land from Norma J. Shanholzer to WV Hunter, LLC in Deed Book 450 Page 4 and the land from Cosner and Sumo to WV Hunter, LLC in Deed Book 449 Page 436. 585.84 Total Acres  
 889.66 Acres in Lots & 20.18 Acres in Road R/W  
 Part of Tax Map 25 Parcels 7 and 10 and Tax Map 18 Parcel 61  
 Surveyed December 2005  
 L & W Enterprises, Inc.  
 14 South Grove Street  
 Fellersburg, WV 25427-4218  
 Date: Dec 28, 2005  
 Scale: 1" = 300'  
 Drawn By: CEK

**LEGEND**

- PROPERTY LINE, EXTERIOR BOUNDARY
- PROPERTY LINE, DIVISION
- PROPERTY LINE, ROAD
- PROPERTY LINE
- ROAD RIGHT-OF-WAY
- RAILROAD R/W
- STATE R/W R/W
- DIVISION ROAD
- EDGE OF PAYMENT
- TRAIL
- APPROXIMATE DRAIN
- POWER LINE
- APPROXIMATE RIDGE LINES
- ADVANCED PROPERTY LINES
- PROPOSED LINE
- ENCLOSURE
- STONE PILE FENCE
- UTILITY POLE
- PROPOSED WELL LOCATION
- PROPOSED SERVICE SITE LOCATION
- LOT OR TRACT NUMBER

**ASHBY FOREST EXISTING ENTRANCE PERMIT NO. 0-00-0229**

**CERTIFY THAT THE INFORMATION CONTAINED ON THIS PLAT IS, TO THE BEST OF MY KNOWLEDGE, CORRECT, AND IN ACCORDANCE WITH THE LAWS OF THIS STATE GOVERNING THE PROFESSION OF LAND SURVEYING.**

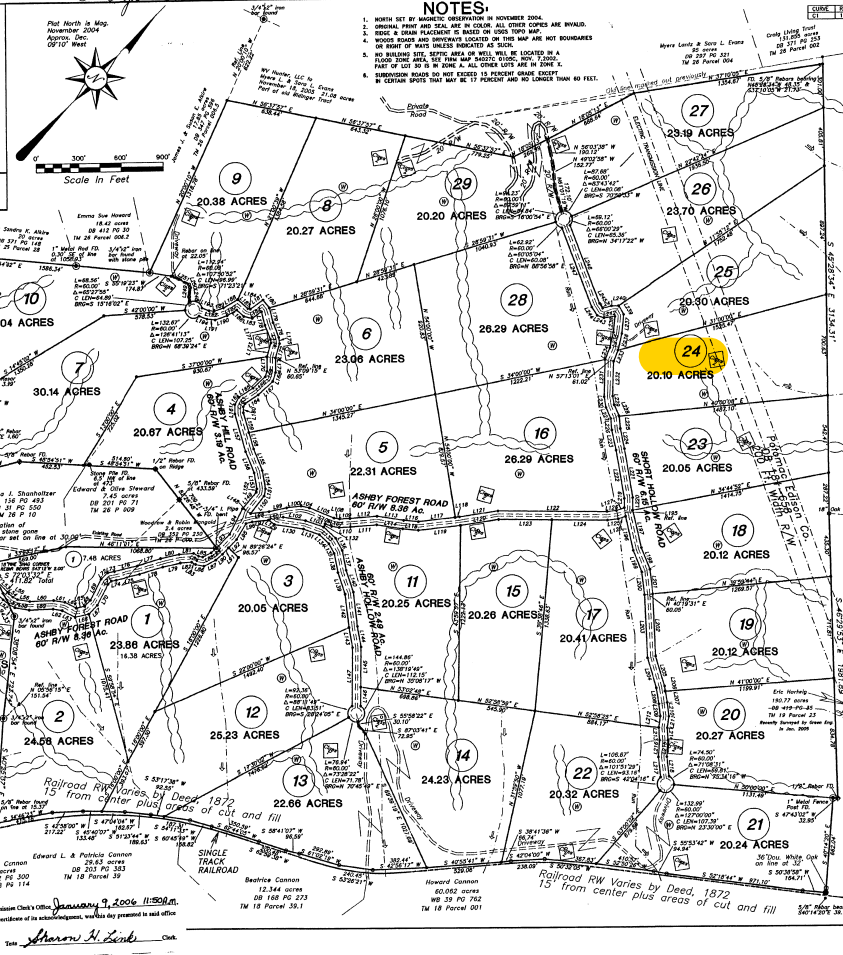
**WV STATE SURVEYOR**  
 Curtis E. Replinger, P.S. No. 518  
 FOR L & W ENTERPRISES, INC.

**WV STATE SURVEYOR**  
 No. 518  
 Curtis E. Replinger, P.S. No. 518  
 For L & W Enterprises, Inc.

**EXEMPT**  
 From The Hampshire County Subdivision Ordinance  
 Par 3.2, D. 1, 2, 3, 4, 5, 6, 7, 8, 9, 10, 11, 12, 13, 14, 15, 16, 17, 18, 19, 20, 21, 22, 23, 24, 25, 26, 27, 28, 29, 30  
 Hampshire County Planning Commission

**STATE OF WEST VIRGINIA, Hampshire County Commission Clerk (Office)**  
 January 9, 2006 11:50 AM  
 and submitted to record.

*Sharon H. Lind* Clerk



**LOT 30 BOUNDARY CALLS**

LINE	BEARING	DISTANCE	AREA	AREA	AREA
L1	N 89° 58' 30" W	112.25	112.25	112.25	112.25
L2	N 89° 58' 30" W	112.25	112.25	112.25	112.25
L3	N 89° 58' 30" W	112.25	112.25	112.25	112.25
L4	N 89° 58' 30" W	112.25	112.25	112.25	112.25
L5	N 89° 58' 30" W	112.25	112.25	112.25	112.25
L6	N 89° 58' 30" W	112.25	112.25	112.25	112.25
L7	N 89° 58' 30" W	112.25	112.25	112.25	112.25
L8	N 89° 58' 30" W	112.25	112.25	112.25	112.25
L9	N 89° 58' 30" W	112.25	112.25	112.25	112.25
L10	N 89° 58' 30" W	112.25	112.25	112.25	112.25
L11	N 89° 58' 30" W	112.25	112.25	112.25	112.25
L12	N 89° 58' 30" W	112.25	112.25	112.25	112.25
L13	N 89° 58' 30" W	112.25	112.25	112.25	112.25
L14	N 89° 58' 30" W	112.25	112.25	112.25	112.25
L15	N 89° 58' 30" W	112.25	112.25	112.25	112.25
L16	N 89° 58' 30" W	112.25	112.25	112.25	112.25
L17	N 89° 58' 30" W	112.25	112.25	112.25	112.25
L18	N 89° 58' 30" W	112.25	112.25	112.25	112.25
L19	N 89° 58' 30" W	112.25	112.25	112.25	112.25
L20	N 89° 58' 30" W	112.25	112.25	112.25	112.25
L21	N 89° 58' 30" W	112.25	112.25	112.25	112.25
L22	N 89° 58' 30" W	112.25	112.25	112.25	112.25
L23	N 89° 58' 30" W	112.25	112.25	112.25	112.25
L24	N 89° 58' 30" W	112.25	112.25	112.25	112.25
L25	N 89° 58' 30" W	112.25	112.25	112.25	112.25
L26	N 89° 58' 30" W	112.25	112.25	112.25	112.25
L27	N 89° 58' 30" W	112.25	112.25	112.25	112.25
L28	N 89° 58' 30" W	112.25	112.25	112.25	112.25
L29	N 89° 58' 30" W	112.25	112.25	112.25	112.25
L30	N 89° 58' 30" W	112.25	112.25	112.25	112.25

**ROAD R/W CALLS**

LINE	BEARING	DISTANCE	AREA	AREA	AREA
R1	N 89° 58' 30" W	112.25	112.25	112.25	112.25
R2	N 89° 58' 30" W	112.25	112.25	112.25	112.25
R3	N 89° 58' 30" W	112.25	112.25	112.25	112.25
R4	N 89° 58' 30" W	112.25	112.25	112.25	112.25
R5	N 89° 58' 30" W	112.25	112.25	112.25	112.25
R6	N 89° 58' 30" W	112.25	112.25	112.25	112.25
R7	N 89° 58' 30" W	112.25	112.25	112.25	112.25
R8	N 89° 58' 30" W	112.25	112.25	112.25	112.25
R9	N 89° 58' 30" W	112.25	112.25	112.25	112.25
R10	N 89° 58' 30" W	112.25	112.25	112.25	112.25
R11	N 89° 58' 30" W	112.25	112.25	112.25	112.25
R12	N 89° 58' 30" W	112.25	112.25	112.25	112.25
R13	N 89° 58' 30" W	112.25	112.25	112.25	112.25
R14	N 89° 58' 30" W	112.25	112.25	112.25	112.25
R15	N 89° 58' 30" W	112.25	112.25	112.25	112.25
R16	N 89° 58' 30" W	112.25	112.25	112.25	112.25
R17	N 89° 58' 30" W	112.25	112.25	112.25	112.25
R18	N 89° 58' 30" W	112.25	112.25	112.25	112.25
R19	N 89° 58' 30" W	112.25	112.25	112.25	112.25
R20	N 89° 58' 30" W	112.25	112.25	112.25	112.25
R21	N 89° 58' 30" W	112.25	112.25	112.25	112.25
R22	N 89° 58' 30" W	112.25	112.25	112.25	112.25
R23	N 89° 58' 30" W	112.25	112.25	112.25	112.25
R24	N 89° 58' 30" W	112.25	112.25	112.25	112.25
R25	N 89° 58' 30" W	112.25	112.25	112.25	112.25
R26	N 89° 58' 30" W	112.25	112.25	112.25	112.25
R27	N 89° 58' 30" W	112.25	112.25	112.25	112.25
R28	N 89° 58' 30" W	112.25	112.25	112.25	112.25
R29	N 89° 58' 30" W	112.25	112.25	112.25	112.25
R30	N 89° 58' 30" W	112.25	112.25	112.25	112.25