

PLAT OF SURVEY FOR WV HUNTER, LLC
 Quail Creek Farm
 471 B + O Overlook Rd., Hedgesville, WV 25427
 304-262-2770
Ashby Forest
 Lots 1-30
 1.5 Miles North of Springfield
 Springfield Dist., Hampshire Co., WV
 Being part of the land from Meadowbrook Corp. to WV Hunter, LLC known as the Bickner Tract With Reference to Deed Book 438 Page 638 Dated September 23, 2004 and the land from Norma J. Shanholzer to WV Hunter, LLC in Deed Book 450 Page 4 and the land from Cosner and Sumo to WV Hunter, LLC in Deed Book 449 Page 436. 585.84 Total Acres
 889.66 Acres in Lots & 20.18 Acres in Road R/W
 Part of Tax Map 25 Parcels 7 and 10 and Tax Map 16 Parcel 61
 Surveyed December 2005
 L & W Enterprises, Inc.
 14 South Grove Street
 Fehersburg, WV 25741-4218
 Date: Dec. 28, 2005
 Scale: 1" = 300'
 Drawn By: CEK

LEGEND
 --- PROPERTY LINE, EXTERIOR BOUNDARY
 --- PROPERTY LINE, DIVISION
 --- PROPERTY LINE, ROAD
 --- PROPERTY LINE, R/W
 --- PROPERTY LINE, STATE R/W
 --- DIVISION ROAD
 --- EASE OF PAYMENT
 --- POWER LINE
 --- APPROXIMATE DRAIN
 --- APPROXIMATE RIDGE LINES
 --- APPROXIMATE PROPERTY LINES
 --- ELEVATION LINE
 --- FLOOD LINE
 --- FLOOD LINE

● TREES AS CORNER NOTED ON PLAT
 ● AS CORNER OR REFERENCE TO CORNER
 ● BEAR POINTING TO
 ● POINT OR CORNER NO MARKER SET
 ● BEAR FROM OR TO CORNER
 ● BEAR FROM AS CORNER
 ● STAKE SET POINT
 ● UTILITY POLE
 ● PROPOSED WELL LOCATION
 ● PROPOSED SERVICE SITE LOCATION
 ● LOT OR TRACT NUMBER

ASHBY FOREST EXISTING ENTRANCE
 PERMIT NO. 0-00-0229
 Telephone: (304) 262-2770
 Fax: (304) 262-2770
 14 South Grove Street
 Fehersburg, WV 25741-4218

I CERTIFY THAT THE INFORMATION CONTAINED ON THIS PLAT IS, TO THE BEST OF MY KNOWLEDGE, CORRECT, AND IN ACCORDANCE WITH THE LAWS OF THIS STATE GOVERNING THE PROFESSION OF LAND SURVEYING.
CEK
 CURTIS E. KEPLINGER, P.S. NO. 518
 FOR L & W ENTERPRISES, INC.

STATE OF WEST VIRGINIA
 Hampshire County Commission Clerk's Office
 9, 2006 11:50 AM
 and submitted to record.

Edward L. & Patricia Cannon
 29.8 acres
 DB 303 PG 143
 TM 18 Parcel 99

Edward L. & Patricia Cannon
 48 acres
 DB 412 PG 300
 TM 18 Parcel 114

Dary M. Cosner
 12.84 acres
 DB 168 PG 273
 TM 18 Parcel 59.1

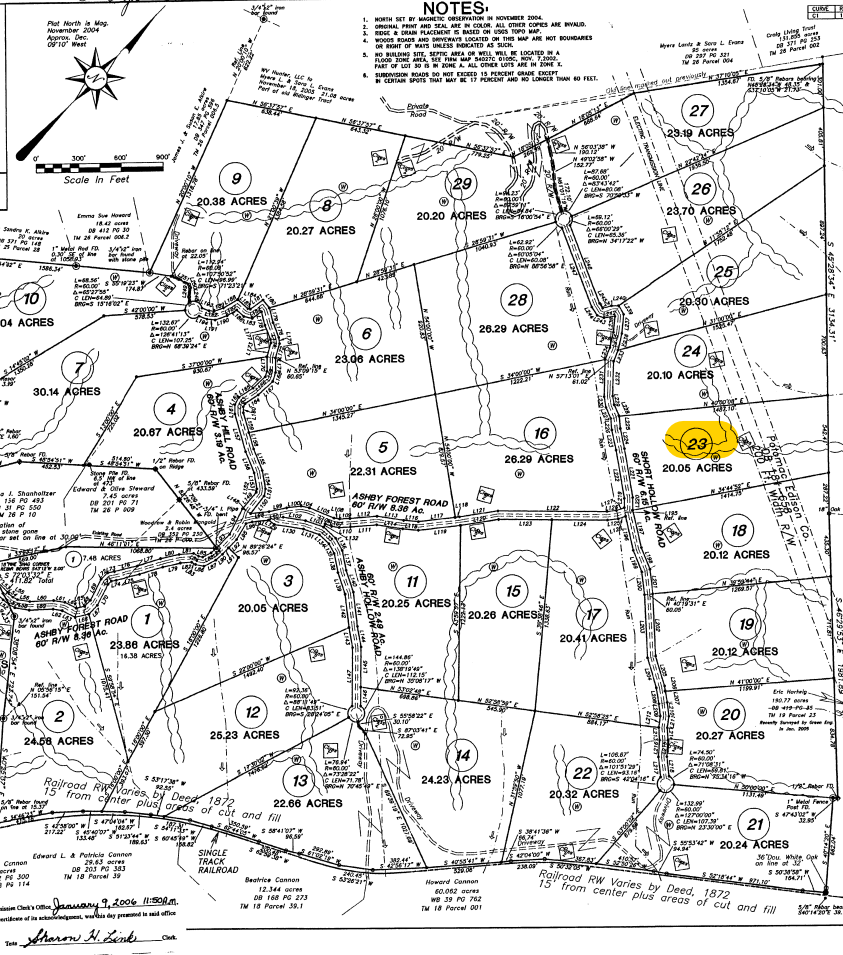
Beatrice Cannon
 60.00 acres
 WB 32 PG 762
 TM 18 Parcel 001

Howard Cannon
 58.78 acres
 WB 32 PG 762
 TM 18 Parcel 001

Eric Horley
 180.37 acres
 DB 449 PG 45
 TM 18 Parcel 22
 Remedy Granted by State Pat. on 06/07/05

State Route 28
 Springfield
 3/4 Mile

From The Hampshire County Subdivision Ordinance
 Part 3.2, Chap. 1, Sec. 1.1(a)
 Hampshire County Planning Commission



LOT 30 BOUNDARY CALLS

LINE	BEARING	DISTANCE	CROSS CORNER	COOR. BEARING	COOR. DISTANCE
L1	S 89°58'30" W	12.25	L12	S 89°58'30" W	12.25
L2	S 89°58'30" W	12.25	L13	S 89°58'30" W	12.25
L3	S 89°58'30" W	12.25	L14	S 89°58'30" W	12.25
L4	S 89°58'30" W	12.25	L15	S 89°58'30" W	12.25
L5	S 89°58'30" W	12.25	L16	S 89°58'30" W	12.25
L6	S 89°58'30" W	12.25	L17	S 89°58'30" W	12.25
L7	S 89°58'30" W	12.25	L18	S 89°58'30" W	12.25
L8	S 89°58'30" W	12.25	L19	S 89°58'30" W	12.25
L9	S 89°58'30" W	12.25	L20	S 89°58'30" W	12.25
L10	S 89°58'30" W	12.25	L21	S 89°58'30" W	12.25
L11	S 89°58'30" W	12.25	L22	S 89°58'30" W	12.25
L12	S 89°58'30" W	12.25	L23	S 89°58'30" W	12.25
L13	S 89°58'30" W	12.25	L24	S 89°58'30" W	12.25
L14	S 89°58'30" W	12.25	L25	S 89°58'30" W	12.25
L15	S 89°58'30" W	12.25	L26	S 89°58'30" W	12.25
L16	S 89°58'30" W	12.25	L27	S 89°58'30" W	12.25
L17	S 89°58'30" W	12.25	L28	S 89°58'30" W	12.25
L18	S 89°58'30" W	12.25	L29	S 89°58'30" W	12.25
L19	S 89°58'30" W	12.25	L30	S 89°58'30" W	12.25
L20	S 89°58'30" W	12.25	L31	S 89°58'30" W	12.25
L21	S 89°58'30" W	12.25	L32	S 89°58'30" W	12.25
L22	S 89°58'30" W	12.25	L33	S 89°58'30" W	12.25
L23	S 89°58'30" W	12.25	L34	S 89°58'30" W	12.25
L24	S 89°58'30" W	12.25	L35	S 89°58'30" W	12.25
L25	S 89°58'30" W	12.25	L36	S 89°58'30" W	12.25
L26	S 89°58'30" W	12.25	L37	S 89°58'30" W	12.25
L27	S 89°58'30" W	12.25	L38	S 89°58'30" W	12.25
L28	S 89°58'30" W	12.25	L39	S 89°58'30" W	12.25
L29	S 89°58'30" W	12.25	L40	S 89°58'30" W	12.25
L30	S 89°58'30" W	12.25	L41	S 89°58'30" W	12.25
L31	S 89°58'30" W	12.25	L42	S 89°58'30" W	12.25
L32	S 89°58'30" W	12.25	L43	S 89°58'30" W	12.25
L33	S 89°58'30" W	12.25	L44	S 89°58'30" W	12.25
L34	S 89°58'30" W	12.25	L45	S 89°58'30" W	12.25
L35	S 89°58'30" W	12.25	L46	S 89°58'30" W	12.25
L36	S 89°58'30" W	12.25	L47	S 89°58'30" W	12.25
L37	S 89°58'30" W	12.25	L48	S 89°58'30" W	12.25
L38	S 89°58'30" W	12.25	L49	S 89°58'30" W	12.25
L39	S 89°58'30" W	12.25	L50	S 89°58'30" W	12.25
L40	S 89°58'30" W	12.25	L51	S 89°58'30" W	12.25
L41	S 89°58'30" W	12.25	L52	S 89°58'30" W	12.25
L42	S 89°58'30" W	12.25	L53	S 89°58'30" W	12.25
L43	S 89°58'30" W	12.25	L54	S 89°58'30" W	12.25
L44	S 89°58'30" W	12.25	L55	S 89°58'30" W	12.25
L45	S 89°58'30" W	12.25	L56	S 89°58'30" W	12.25
L46	S 89°58'30" W	12.25	L57	S 89°58'30" W	12.25
L47	S 89°58'30" W	12.25	L58	S 89°58'30" W	12.25
L48	S 89°58'30" W	12.25	L59	S 89°58'30" W	12.25
L49	S 89°58'30" W	12.25	L60	S 89°58'30" W	12.25
L50	S 89°58'30" W	12.25	L61	S 89°58'30" W	12.25
L51	S 89°58'30" W	12.25	L62	S 89°58'30" W	12.25
L52	S 89°58'30" W	12.25	L63	S 89°58'30" W	12.25
L53	S 89°58'30" W	12.25	L64	S 89°58'30" W	12.25
L54	S 89°58'30" W	12.25	L65	S 89°58'30" W	12.25
L55	S 89°58'30" W	12.25	L66	S 89°58'30" W	12.25
L56	S 89°58'30" W	12.25	L67	S 89°58'30" W	12.25
L57	S 89°58'30" W	12.25	L68	S 89°58'30" W	12.25
L58	S 89°58'30" W	12.25	L69	S 89°58'30" W	12.25
L59	S 89°58'30" W	12.25	L70	S 89°58'30" W	12.25
L60	S 89°58'30" W	12.25	L71	S 89°58'30" W	12.25
L61	S 89°58'30" W	12.25	L72	S 89°58'30" W	12.25
L62	S 89°58'30" W	12.25	L73	S 89°58'30" W	12.25
L63	S 89°58'30" W	12.25	L74	S 89°58'30" W	12.25
L64	S 89°58'30" W	12.25	L75	S 89°58'30" W	12.25
L65	S 89°58'30" W	12.25	L76	S 89°58'30" W	12.25
L66	S 89°58'30" W	12.25	L77	S 89°58'30" W	12.25
L67	S 89°58'30" W	12.25	L78	S 89°58'30" W	12.25
L68	S 89°58'30" W	12.25	L79	S 89°58'30" W	12.25
L69	S 89°58'30" W	12.25	L80	S 89°58'30" W	12.25
L70	S 89°58'30" W	12.25	L81	S 89°58'30" W	12.25
L71	S 89°58'30" W	12.25	L82	S 89°58'30" W	12.25
L72	S 89°58'30" W	12.25	L83	S 89°58'30" W	12.25
L73	S 89°58'30" W	12.25	L84	S 89°58'30" W	12.25
L74	S 89°58'30" W	12.25	L85	S 89°58'30" W	12.25
L75	S 89°58'30" W	12.25	L86	S 89°58'30" W	12.25
L76	S 89°58'30" W	12.25	L87	S 89°58'30" W	12.25
L77	S 89°58'30" W	12.25	L88	S 89°58'30" W	12.25
L78	S 89°58'30" W	12.25	L89	S 89°58'30" W	12.25
L79	S 89°58'30" W	12.25	L90	S 89°58'30" W	12.25
L80	S 89°58'30" W	12.25	L91	S 89°58'30" W	12.25
L81	S 89°58'30" W	12.25	L92	S 89°58'30" W	12.25
L82	S 89°58'30" W	12.25	L93	S 89°58'30" W	12.25
L83	S 89°58'30" W	12.25	L94	S 89°58'30" W	12.25
L84	S 89°58'30" W	12.25	L95	S 89°58'30" W	12.25
L85	S 89°58'30" W	12.25	L96	S 89°58'30" W	12.25
L86	S 89°58'30" W	12.25	L97	S 89°58'30" W	12.25
L87	S 89°58'30" W	12.25	L98	S 89°58'30" W	12.25
L88	S 89°58'30" W	12.25	L99	S 89°58'30" W	12.25
L89	S 89°58'30" W	12.25	L100	S 89°58'30" W	12.25

ROAD R/W CALLS

LINE	BEARING	DISTANCE	CROSS CORNER	COOR. BEARING	COOR. DISTANCE
R1	S 89°58'30" W	12.25	R2	S 89°58'30" W	12.25
R2	S 89°58'30" W	12.25	R3	S 89°58'30" W	12.25
R3	S 89°58'30" W	12.25	R4	S 89°58'30" W	12.25
R4	S 89°58'30" W	12.25	R5	S 89°58'30" W	12.25
R5	S 89°58'30" W	12.25	R6	S 89°58'30" W	12.25
R6	S 89°58'30" W	12.25	R7	S 89°58'30" W	12.25
R7	S 89°58'30" W	12.25	R8	S 89°58'30" W	12.25
R8	S 89°58'30" W	12.25	R9	S 89°58'30" W	12.25
R9	S 89°58'30" W	12.25	R10	S 89°58'30" W	12.25
R10	S 89°58'30" W	12.25	R11	S 89°58'30" W	12.25
R11	S 89°58'30" W	12.25	R12	S 89°58'30" W	12.25
R12	S 89°58'30" W	12.25	R13	S 89°58'30" W	12.25
R13	S 89°58'30" W	12.25	R14	S 89°58'30" W	12.25
R14	S 89°58'30" W	12.25	R15	S 89°58'30" W	12.25
R15	S 89°58'30" W	12.25	R16	S 89°58'30" W	12.25
R16	S 89°58'30" W	12.25	R17	S 89°58'30" W	12.25
R17	S 89°58'30" W	12.25	R18	S 89°58'30" W	12.25
R18	S 89°58'30" W	12.25	R19	S 89°58'30" W	12.25
R19	S 89°58'30" W	12.25	R20	S 89°58'30" W	12.25
R20	S 89°58'30" W	12.25	R21	S 89°58'30" W	12.25
R21	S 89°58'30" W	12.25	R22	S 89°58'30" W	12.25
R22	S 89°58'30" W	12.25	R23	S 89°58'30" W	12.25
R23	S 89°58'30" W	12.25	R24	S 89°58'30" W	12.25
R24	S 89°58'30" W	12.25	R25	S 89°58'30" W	12.25
R25	S 89°58'30" W	12.25	R26	S 89°58'30" W	12.25
R26	S 89°58'30" W	12.25	R27	S 89°58'30" W	12.25
R27	S 89°58'30" W	12.25	R28	S 89°58'30" W	12.25
R28	S 89°58'30" W	12.25	R29	S 89°58'30" W	12.25
R29	S 89°58'30" W	12.25	R30	S 89°58'30" W	12.25
R30	S 89°58'30" W	12.25	R31	S 89°58'30" W	12.25
R31	S 89°58'30" W	12.25	R32	S 89°58'30" W	12.25
R32	S 89°58'30" W	12.25	R33	S 89°58'30" W	12.25
R33	S 89°58'30" W	12.25	R34	S 89°58'30" W	12.25
R34	S 89°58'30" W	12.25	R35	S 89°58'30" W	12.25
R35	S 89°58'30" W	12.25	R36	S 89°58'30" W	12.25
R36	S 89°58'30" W	12.25	R37	S 89°58'30" W	12.25
R37	S 89°58'30" W	12.25	R38	S 89°58'30" W	12.25
R38	S 89°58'30" W	12.25	R39	S 89°58'30" W	12.25
R39	S 89°58'30" W	12.25	R40	S 89°58'30" W	12.25
R40	S 89°58'30" W	12.25	R41	S 89°58'30" W	12.25
R41	S 89°58'30" W	12.25	R42	S 89°58'30" W	12.25
R42	S 89°58'30" W	12.25	R43	S 89°58'30" W	12.25
R43	S 89°58'30" W	12.25	R44	S 89°58'30" W	12.25
R44	S 89°58'30" W	12.25	R45	S 89°58'30" W	12.25
R45	S 89°58'30" W	12.25	R46	S 89°58'30" W	12.25
R46	S 89°58'30" W	12.25	R47	S 89°58'30" W	12.25
R47	S 89°58'30" W	12.25	R48	S 89°58'30" W	12.25
R48	S 89°58'30" W	12.25	R49	S 89°58'30" W	12.25
R49	S 89°58'30" W	12.25	R50	S 89°58'30" W	12.25
R50	S 89°58'30" W	12.25	R51	S 89°58'30" W	12.25
R51	S 89°58'30" W	12.25	R52	S 89°58'30" W	12.25
R52	S 89°58'30" W	12.25	R53	S 89°58'30" W	12.25
R53	S 89°58'30" W	12.25	R54	S 89°58'30" W	12.25
R54	S 89°58'30" W	12.25	R55	S 89°58'30" W	12.25
R55	S 89°58'30" W	12.25	R56	S 89°58'30" W	12.25
R56	S 89°58'30" W	12.25	R57	S 89°58'30" W	12.25
R57	S 89°58'30" W	12.25	R58	S 89°58'30" W	12.25
R58	S 89°58'30" W	12.25	R59	S 89°58'30" W	12.25
R59	S 89°58'30" W	12.25	R60	S 89°58'30" W	12.25
R60	S 89°58'30" W	12.25	R61	S 89°58'30" W	12.25
R					