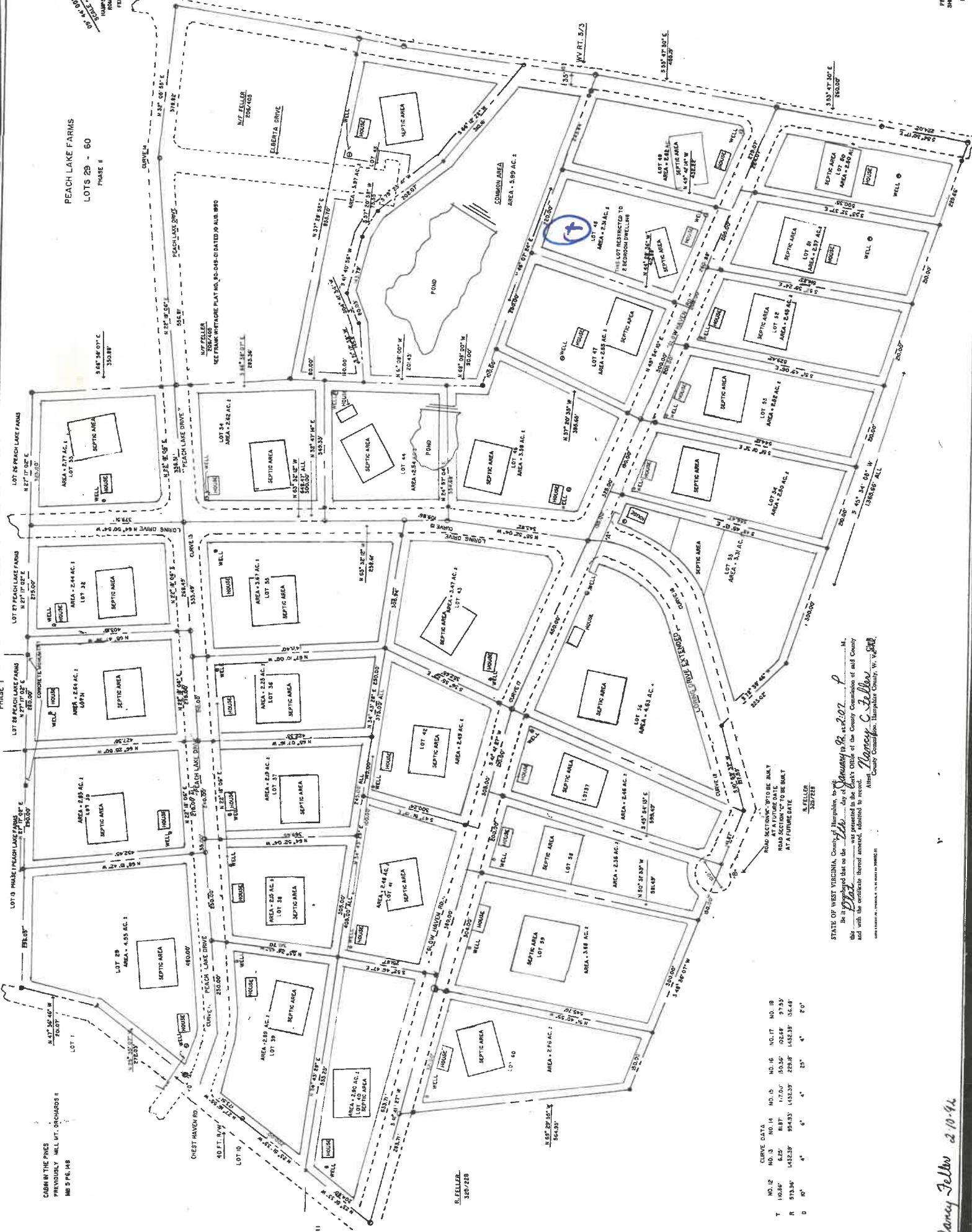


PEACH LAKE FARMS  
LOTS 29 - 60  
PHASE II

- LEGEND**
- 4. NO. 8 REBAR
  - 5. NO. 6 REBAR
  - 6. 4" DIA. CONCRETE PIPE
  - 7. 6" DIA. CONCRETE PIPE
  - 8. 8" DIA. CONCRETE PIPE
  - 9. 10" DIA. CONCRETE PIPE
  - 0. AS SHOWN
- NOTES**
- ALL RIGHTS-OF-WAY OR 10' TO TOP OF PROPOSED CURB IN



STATE OF WEST VIRGINIA, County of Hampshire, to-wit:  
 I, Nancy C. Fellow, of said County, do hereby certify that on the 20th day of January 1998, at 2:00 P.M.,  
 the within plat was presented to the Clerk's Office of the County Commission of said County  
 and with the certificate thereof annexed, filed to record.  
 Nancy C. Fellow  
 County Commission, Hampshire County, W. Va.

ROAD SECTIONS TO BE BUILT AT A FUTURE DATE  
 ROAD SECTIONS TO BE BUILT AT A FUTURE DATE

NO. 12	NO. 3	NO. 14	NO. 5	NO. 16	NO. 17	NO. 18
T 10.28'	8.25'	8.17'	17.00'	53.35'	02.88'	27.33'
R 513.36'	1432.28'	5543.31'	1432.33'	228.08'	1432.33'	36.48'
D 10'	4'	6'	4'	25'	4'	2'

Nancy Fellow 2-10-94