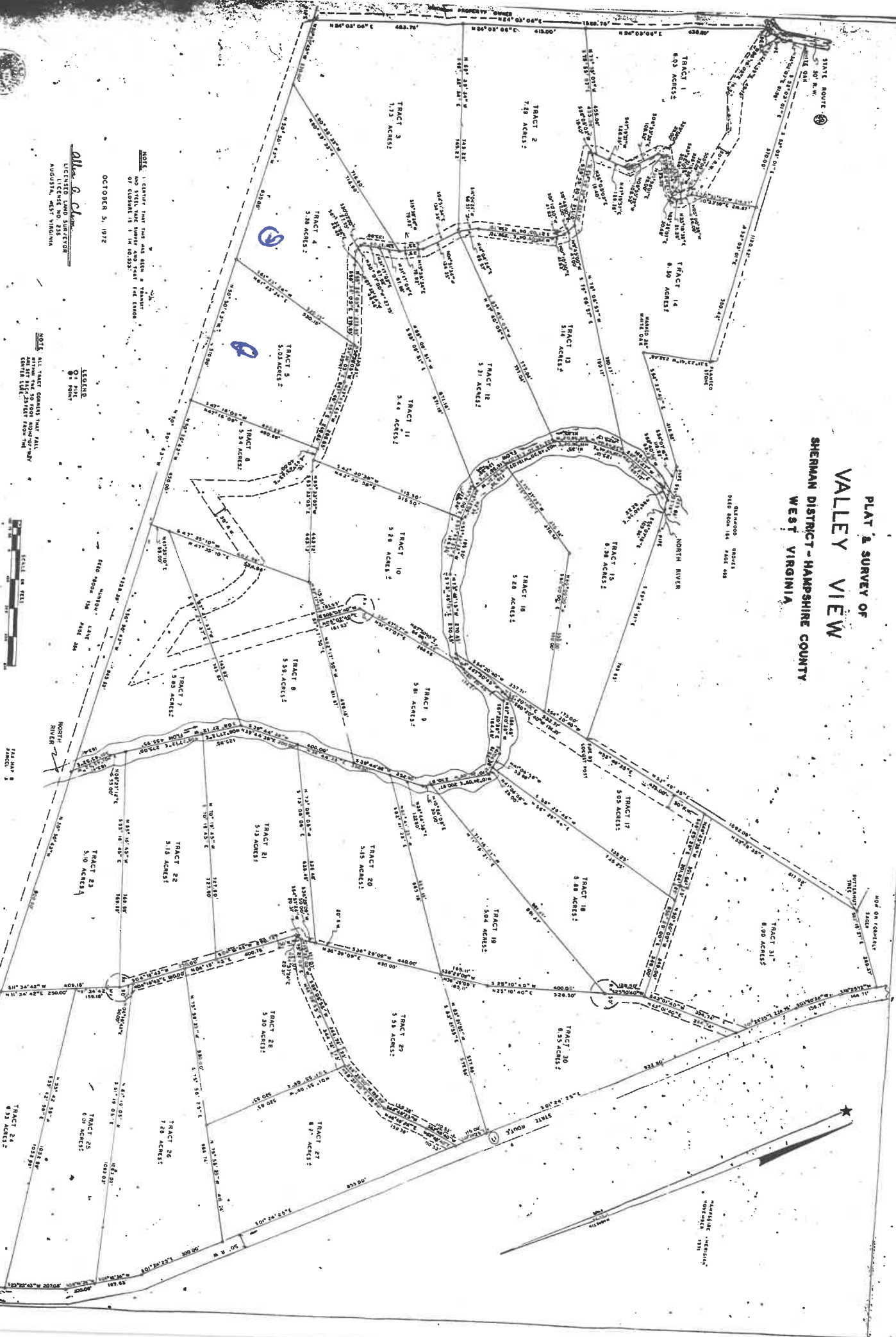


PLAT & SURVEY OF
VALLEY VIEW
 SHERMAN DISTRICT - HAMPSHIRE COUNTY
 WEST VIRGINIA

QUADRUPOLE SUBJECT
 2820 ACRES 134 PAGES 418



NOTE: 1. CENTER LINE FOR THE NORTH RIVER AND STATE ROUTE NUMBER AND THAT THE SPACING OF CLOSURE IS 1 IN 10,000.

OCTOBER 5, 1972

Allen G. Clark
 LICENSED LAND SURVEYOR
 AUGUSTIN, WEST VIRGINIA

LEGEND
 0-1 PIN
 0-2 POINT

NOTE: ALL TRACT CORNERS THAT FALL WITHIN THE BOUNDARIES OF THIS PLAT ARE TO BE MARKED WITH A PIN OR POINT AS SHOWN IN THE TABLE.



PLAT MAP 8
 2000 0001 000
 PAGE 187

C & B Blueprint Company
 701 EIGHTH AVENUE
 HUNTINGTON, WEST VIRGINIA 25701