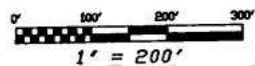


CAROL & HARRIS, INC., ENGINEERS, WV REG. NO. 59569-00

STATE OF WEST VIRGINIA, MINERAL COUNTY, TO-WIT: Be it remembered that on this 19th day of August 1999, at _____ o'clock _____ M., the foregoing _____ with the certificate thereof annexed, was presented in the Office of the Clerk of the County Commission and admitted to record.

Plat of Survey of 15.94 Acres +/- for Kenneth Dale Chase, Jr. Part of D. B. 183/676, Tr. 2, & F30-8 Frankfort District Mineral County WV.



**APPROVED
EXEMPT**
AUG 06 1999

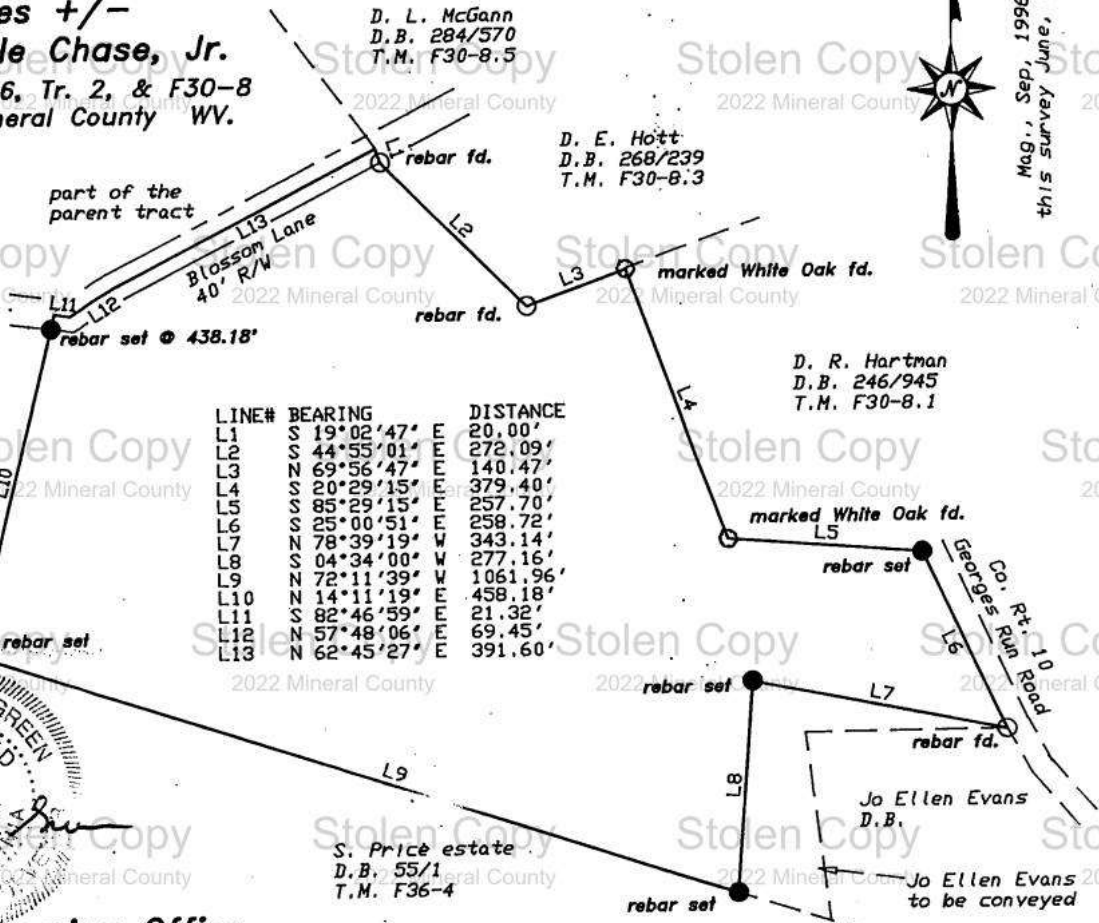
part of the
parent tract
Mineral County Planning Commission
County Planner

BOOK 297 PAGE 150



Green Engineering Office
Burlington, WV. 304/289-5033

LINE#	BEARING	DISTANCE
L1	S 19°02'47" E	20.00'
L2	S 44°55'01" E	272.09'
L3	N 69°56'47" E	140.47'
L4	S 20°29'15" E	379.40'
L5	S 85°29'15" E	257.70'
L6	S 25°00'51" E	258.72'
L7	N 78°39'19" W	343.14'
L8	S 04°34'00" W	277.16'
L9	N 72°11'39" W	1061.96'
L10	N 14°11'19" E	458.18'
L11	S 82°46'59" E	21.32'
L12	N 57°48'06" E	69.45'
L13	N 62°45'27" E	391.60'



Mag., Sep, 1996
this survey June, 1999

Stolen Copy 2022 Mineral County