

PLAT OF SURVEY FOR:
ALAN L. BRILL
& CONNIE L. BRILL

TRACT A - NORTH SIDE HIGHWAY 259
= 1.171 TOTAL ACRES
(MERGER)-SEE NOTE E

TRACT B (SEE NOTE H)
= 0.704 TOTAL ACRES

TRACT C - SOUTH SIDE HIGHWAY 259
= 11.678 TOTAL ACRES
(MERGER)- SEE NOTE F

CAPON DISTRICT
HAMPSHIRE COUNTY, WEST VIRGINIA
TAX MAP 26, PARCELS 19 AND 27

LEGEND:

CORNER NOS. 1, 17, 27 AND E ARE 5/8" REBAR, FOUND.
CORNER NO. 2 IS A 2" HICKORY TREE, FOUND.
CORNER NO. 3 IS A BENT 5/8" REBAR, FOUND.
CORNER NO. 4 IS A 5/8" CAPPED DAVEY REBAR, SET FROM WHICH A 5/8" CAPPED FAW REBAR, FOUND BEARS N 34 DEGREES - 48 MINUTES - 43 SECONDS W AT 4.36 FT.
CORNER NO. A IS A 5/8" CAPPED FAW REBAR, FOUND.
CORNER NO. 5 IS A POINT IN THE CENTERLINE OF ROUTE NO. 239.
CORNER NO. 6 IS A POINT IN THE SOUTHEAST BOUNDS OF WEST VIRGINIA NUMBERED HIGHWAY 259, "CARPERS PKE" AT THE INTERSECTION OF THE CENTERLINE OF WV COUNTY NUMBERED ROUTE 239, "MOUNT ARRY ROAD".
CORNER NOS. 8 AND 9 ARE POINTS AT THE INTERSECTION OF AN ORIGINAL LINE WITH BOUNDS OF SAID ROUTE 259.
CORNER NOS. 7, 9, 11, 13, 14, 20 & 21 ARE WOOD RIGHT-OF-WAY CONCRETE MONUMENTS IN BOUNDS OF ROUTE 259.
CORNER NO. 8 IS A BROKEN OFF RAW CONCRETE MONUMENT, FOUND.
CORNER NOS. N. 10, 12 AND 15 ARE POINTS IN THE BOUNDS OF ROUTE 259.
CORNER NO. C IS A 5/8" CAPPED MORELAND REBAR, FOUND.
CORNER NO. F IS A 1/2" WHITE OAK TREE, FOUND.
CORNER NO. 18 IS AN ANGLE POINT.
CORNER NO. 18 IS A POINT IN BOUNDS OF ROUTE 259 AT INTERSECTION OF AN ORIGINAL LINE.
CORNER NO. 18 IS A POINT IN A PROPERTY LINE IN THE CENTER OF AN EXISTING ROAD.
CORNER NO. 25 IS A POINT IN SAID BOUNDS OF ROUTE 259 AT INTERSECTION OF AN ORIGINAL LINE.
CORNER NOS. G, H, J, 19, 22, 23, 24, 26, 28, 29 AND 30 ARE POINTS IN AFORESAID BOUNDS OF ROUTE 259.

NOTES CONTINUED:

NOTE E: THIS SURVEY IS A MINOR SUBDIVISION UNDER SECTION 11 PARAGRAPH (1): THIS SURVEY OF 0.903 TOTAL ACRES WHICH IS A PART OF AN ORIGINAL 15.44 TOTAL ACRE TRACT WHICH IS OWNED NOW BY ALAN L. BRILL AND CONNIE L. BRILL BROTHERS, SEE W.B. 70, PG. 594, D.B. 159, PG. 81; SEE D.B. 308, PG. 318, PLAT; SEE TM 26, PARCEL 19 TO BE MERGED WITH THE ADJOINING 0.268 TOTAL ACRE TRACT WHICH IS A PART OF AN ORIGINAL 3 ACRE TRACT ASSESSED AS 0.223 TOTAL ACRES AND IS OWNED NOW BY ALAN L. BRILL AND CONNIE L. BRILL, SEE W.B. 70, PG. 594, D.B. 159, PG. 81; SEE D.B. 308, PG. 318, PLAT; SEE TM 26, PARCEL 27. THE NEW TRACT WILL NOW CONTAIN 1.171 TOTAL ACRES AND WILL BE KNOWN NOW AS TRACT A. ANY FURTHER MODIFICATION OF THIS LAND SHALL BE IN COMPLIANCE WITH THE HAMPSHIRE COUNTY SUBDIVISION OR LAND DEVELOPMENT ORDINANCE.

NOTE F: THIS SURVEY IS A MINOR SUBDIVISION UNDER SECTION 11 PARAGRAPH (1): THIS SURVEY OF 10.71 TOTAL ACRES WHICH IS A PART OF AN ORIGINAL 5 ACRE ACRE TRACT ASSESSED AS 0.223 TOTAL ACRES WHICH IS OWNED NOW BY ALAN L. BRILL AND CONNIE L. BRILL, SEE W.B. 70, PG. 594, D.B. 159, PG. 81; SEE D.B. 308, PG. 318, PLAT; SEE TM 26, PARCEL 27 TO BE MERGED WITH THE ADJOINING 10.487 TOTAL ACRE TRACT WHICH IS A PART OF AN ORIGINAL 15.44 TOTAL ACRE TRACT AND IS OWNED NOW BY ALAN L. BRILL AND CONNIE L. BRILL, SEE W.B. 70, PG. 594, D.B. 159, PG. 81; SEE D.B. 308, PG. 318, PLAT; SEE TM 26, PARCEL 19. THE NEW TRACT WILL NOW CONTAIN 11.678 TOTAL ACRES AND WILL BE KNOWN NOW AS TRACT C. ANY FURTHER MODIFICATION OF THIS LAND SHALL BE IN COMPLIANCE WITH THE HAMPSHIRE COUNTY SUBDIVISION OR LAND DEVELOPMENT ORDINANCE.

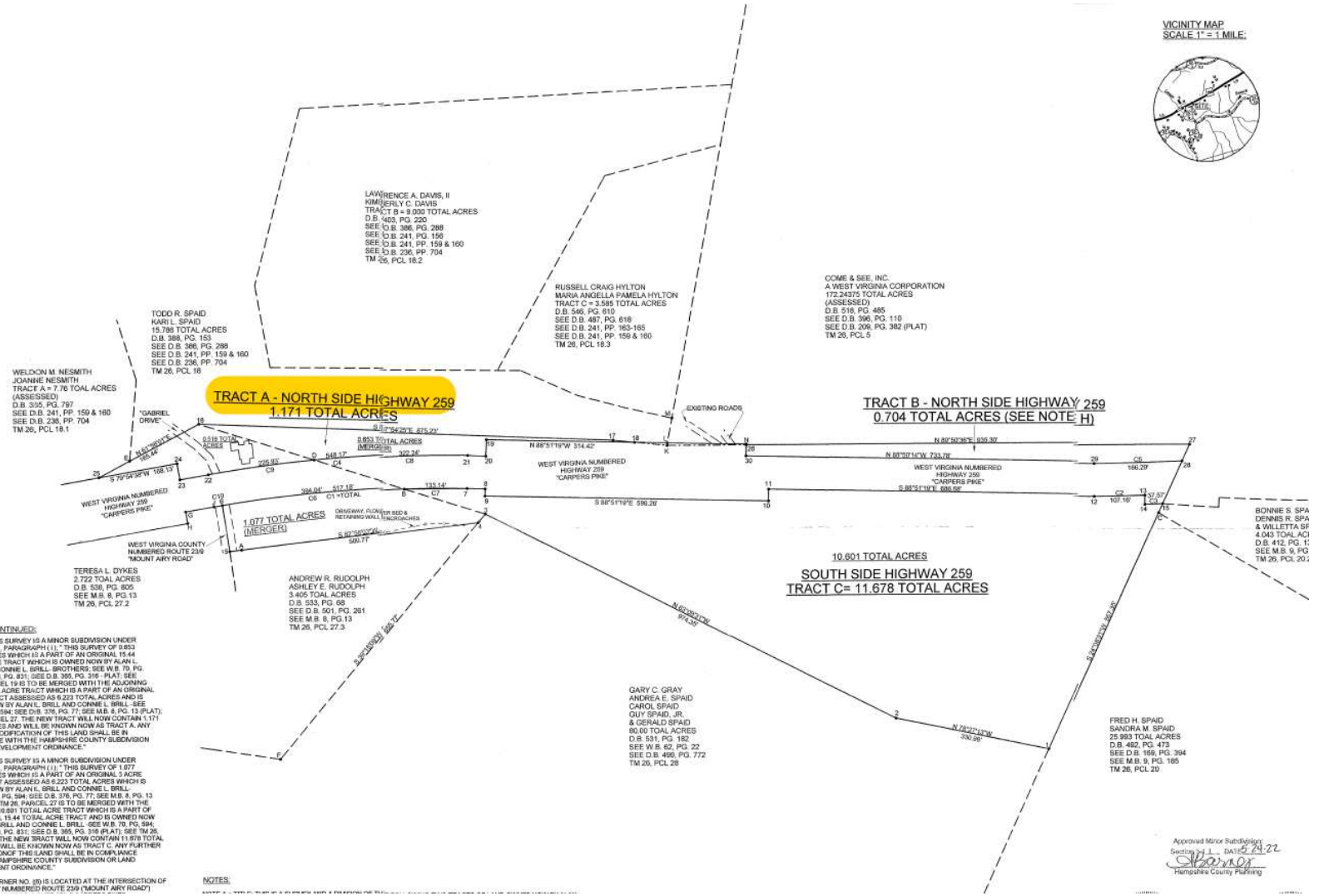
NOTE G: CORNER NO. (8) IS LOCATED AT THE INTERSECTION OF WV COUNTY NUMBERED ROUTE 239 (MOUNT ARRY ROAD)

NOTES:

COURSE AND DISTANCE CHART:

Line Bearing Distance

VICINITY MAP
SCALE 1" = 1 MILE



TRACT A - NORTH SIDE HIGHWAY 259
1.171 TOTAL ACRES

TRACT B - NORTH SIDE HIGHWAY 259
0.704 TOTAL ACRES (SEE NOTE H)

10.601 TOTAL ACRES
SOUTH SIDE HIGHWAY 259
TRACT C = 11.678 TOTAL ACRES

LAWRENCE A. DAVIS, II
KIMBERLY C. DAVIS
TRACT B = 8.000 TOTAL ACRES
D.B. 463, PG. 200
SEE D.B. 306, PG. 288
SEE D.B. 241, PG. 156
SEE D.B. 241, PP. 159 & 160
SEE D.B. 236, PG. 704
TM 26, PCL 16.2

RUSSELL CRAIG HYLTON
MARIA ANGELLA PAMELA HYLTON
TRACT C = 3.595 TOTAL ACRES
D.B. 546, PG. 810
SEE D.B. 487, PG. 618
SEE D.B. 241, PP. 163-165
SEE D.B. 241, PP. 159 & 160
TM 26, PCL 16.3

COME & SEE, INC.
A WEST VIRGINIA CORPORATION
172.24375 TOTAL ACRES
(ASSESSED)
D.B. 516, PG. 485
SEE D.B. 306, PG. 110
SEE D.B. 206, PG. 382 (PLAT)
TM 26, PCL 5

TODD R. SPAID
KARI L. SPAID
15.786 TOTAL ACRES
D.B. 308, PG. 183
SEE D.B. 241, PP. 159 & 160
SEE D.B. 236, PG. 704
TM 26, PCL 16

WELDON M. NESMITH
JENNIE NESMITH
TRACT A = 7.76 TOTAL ACRES
(ASSESSED)
D.B. 505, PG. 757
SEE D.B. 241, PP. 159 & 160
SEE D.B. 236, PG. 704
TM 26, PCL 16.1

TERESA L. DYKES
2.722 TOTAL ACRES
D.B. 538, PG. 805
SEE M.B. 9, PCL 13
TM 26, PCL 27.2

ANDREW R. RUDOLPH
ASHLEY E. RUDOLPH
3.405 TOTAL ACRES
D.B. 533, PG. 68
SEE D.B. 501, PG. 121
SEE M.B. 9, PCL 13
TM 26, PCL 27.3

DARY C. GRAY
ANDREA E. SPAID
CAROL SPAID
GUY SPAID, JR.
& GERALD SPAID
80.00 TOTAL ACRES
D.B. 531, PG. 182
SEE W.B. 62, PG. 772
SEE D.B. 488, PG. 772
TM 26, PCL 28

BONNIE S. SPAID
DENNIS R. SPAID
A WILLETTS SE
4.043 TOTAL ACRES
D.B. 412, PG. 11
SEE M.B. 9, PCL 13
TM 26, PCL 20.2

FRED H. SPAID
SANDRA M. SPAID
25.993 TOTAL ACRES
D.B. 492, PG. 473
SEE D.B. 168, PG. 394
SEE M.B. 9, PCL 185
TM 26, PCL 20

Approval Minor Subdivision
Section 11 L. DATE 04/24/22
SWAYNE
Hampshire County Planning