

# LEGEND

STANDARD SYMBOLS THAT MAY APPEAR ON THIS PLAT

- STEEL PIPE/PIN FOUND
- 5/8 X 30" REBAR SET
- ⊕ CONCRETE MARKER FOUND
- ⊗ PLANTED STONE FOUND
- FENCE POST
- ▲ POINT
- ⊕ TREE-AS LABELED

LINE	BEARING	DISTANCE
L1	S 50°25'29" E	190.01'
L2	N 69°31'19" W	62.53'
L3	S 82°28'33" W	160.60'
L4	S 71°02'51" W	64.19'
L5	S 54°15'42" W	79.88'
L6	S 57°55'09" W	125.45'
L7	S 64°10'50" W	126.44'
L8	S 76°06'26" W	95.31'
L9	S 82°53'06" W	116.23'
L10	S 84°23'11" W	53.96'
L11	S 64°25'29" W	126.74'



SURVEYED BY:

Kerry S. Shultz, P.S. #1850

Date: APRIL 22, 2023

Scale: 1" = 300'



FIELD SURVEYED AND DRAWN BY GV

DATE: 04/22/23

23001.048

PROJECTS\2023\23001\_SURVEY2023\RKK.048.MALLOW.LYNDA\DWG\MALLOW2023.DWG

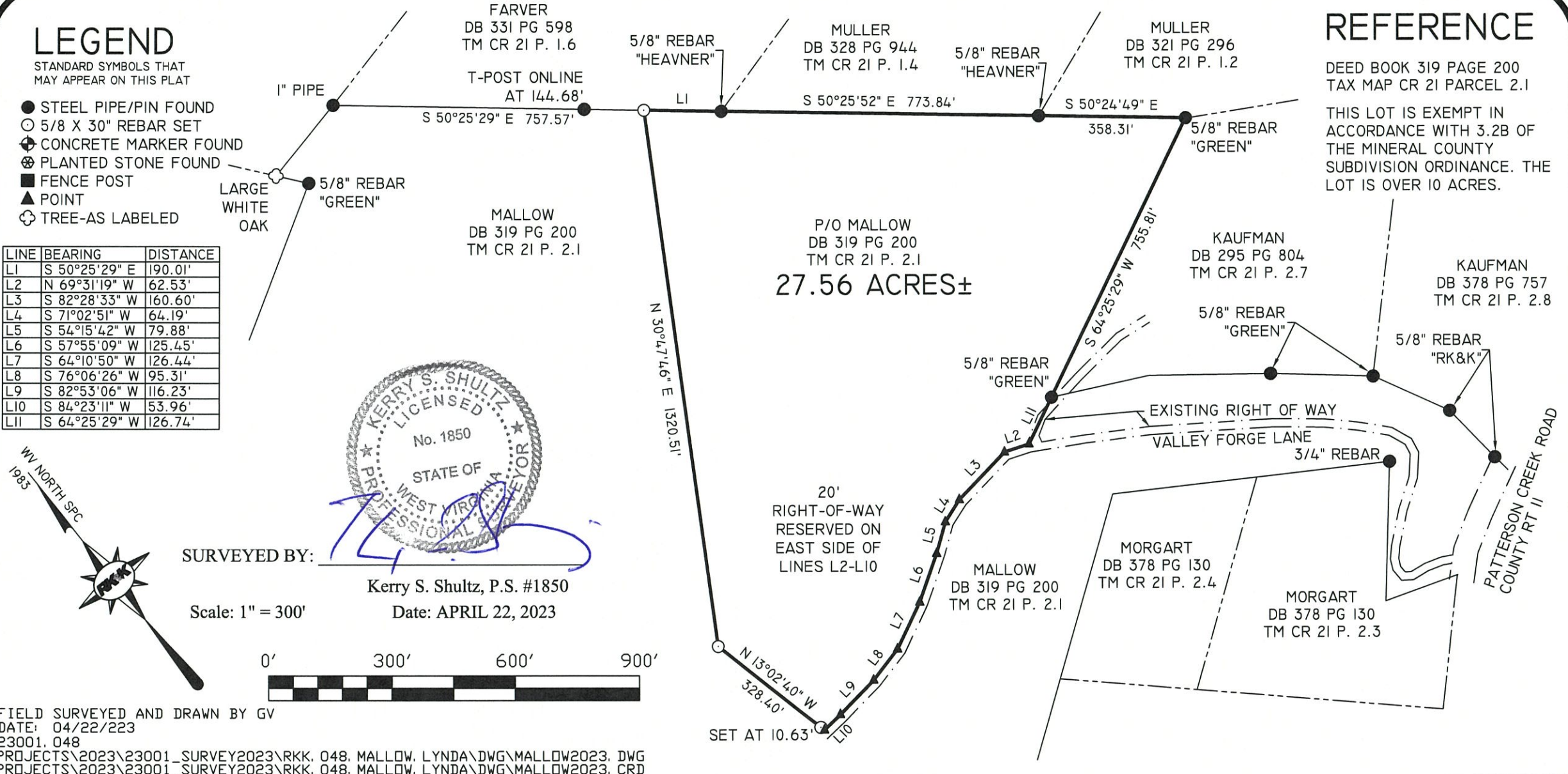
PROJECTS\2023\23001\_SURVEY2023\RKK.048.MALLOW.LYNDA\DWG\MALLOW2023.CRD

# REFERENCE

DEED BOOK 319 PAGE 200  
TAX MAP CR 21 PARCEL 2.1

THIS LOT IS EXEMPT IN ACCORDANCE WITH 3.2B OF THE MINERAL COUNTY SUBDIVISION ORDINANCE. THE LOT IS OVER 10 ACRES.

P/O MALLOW  
DB 319 PG 200  
TM CR 21 P. 2.1  
**27.56 ACRES±**



**RUMMEL, KLEPPER & KAHL, LLP**  
159 PLAZA DRIVE  
KEYSER, WEST VIRGINIA 26726  
T - 304.788.3370 F - 304.788.3577  
www.rkk.com

PATTERSON CREEK ROAD  
CABIN RUN DISTRICT  
MINERAL COUNTY WEST VIRGINIA

**PLAT OF DIVISION**  
FOR  
**LYNDA M. MALLOW**