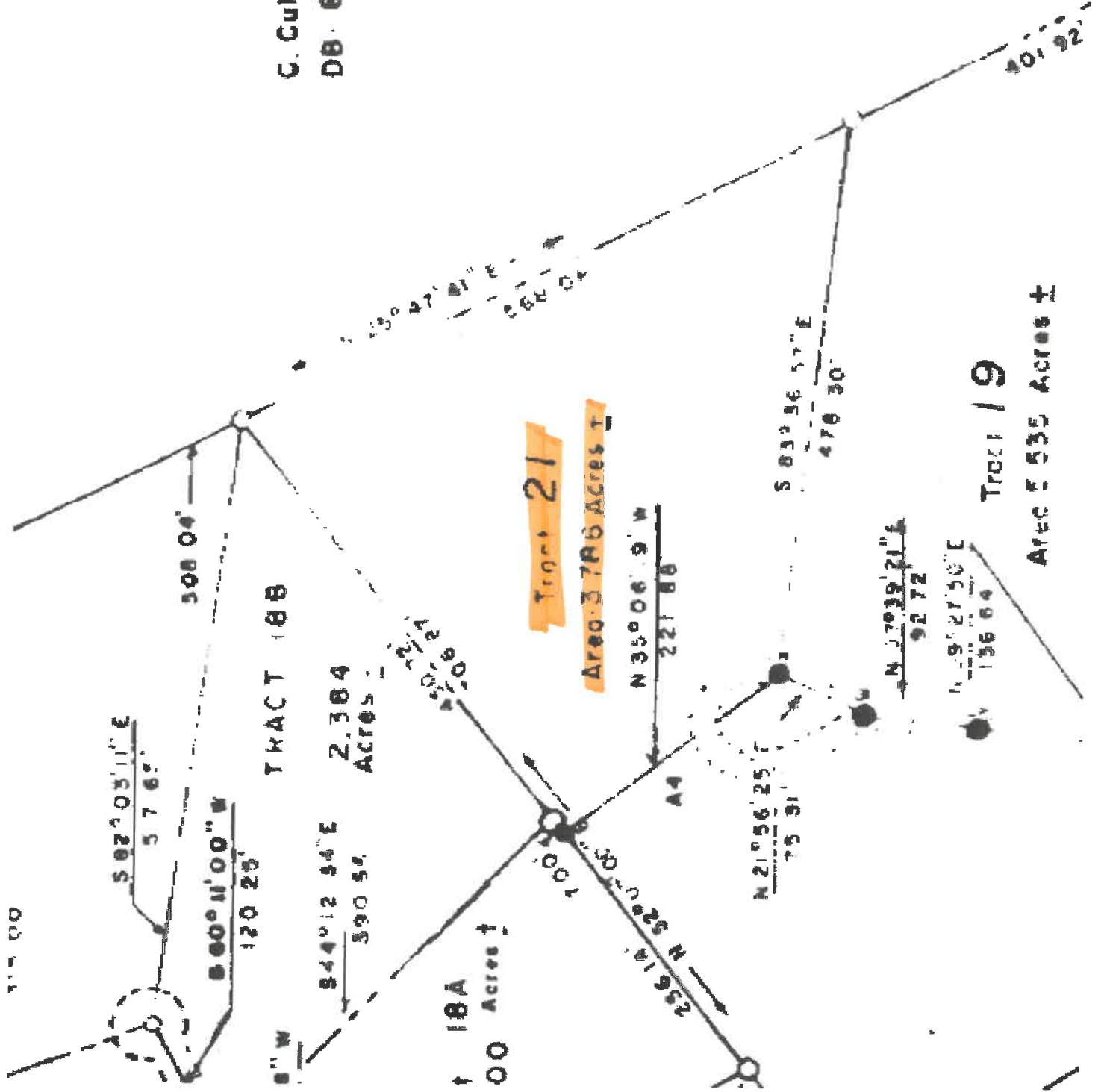
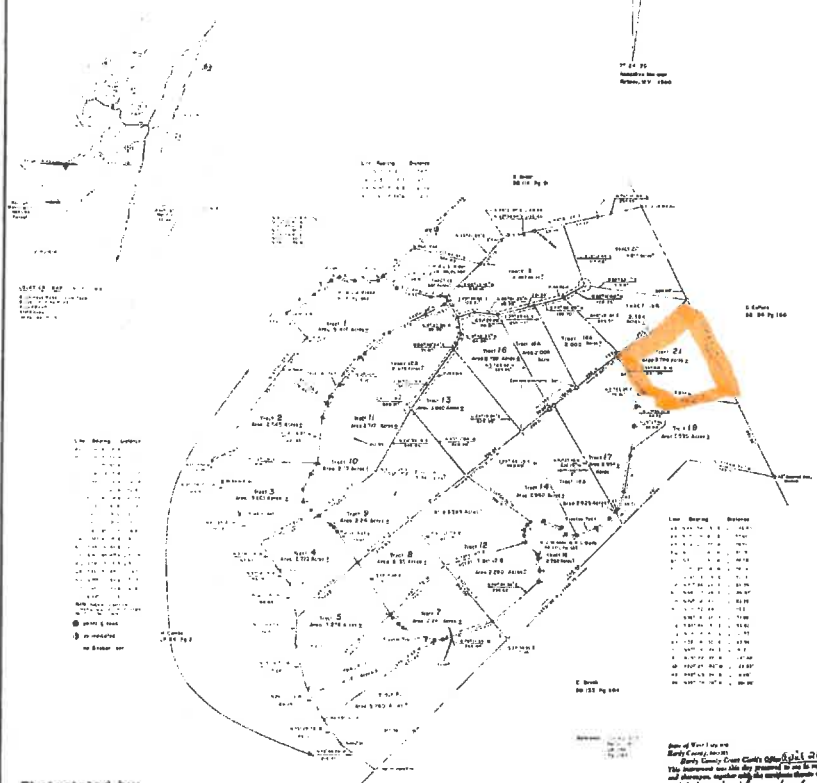


C. Cullers
DB. 84 Pg. 1



Plot of a Survey
of
LOST RIVER MOUNTAIN
Lost River District, Hardy Co.
W.V.



Photostated by:
C & B Blueprint Co.
231 216 216
WASHINGTON, D. C.

Map of West Virginia
Early County, 1860-1870
Hardy County, 1870-1880
The boundaries are shown by dotted lines and the names of the owners are indicated in red.
John H. Johnston
County Clerk, Hardy County, W. Va.

<p>NO. 10000 & 10001 JANUARY 1, 1911</p> <p>NO. 10002 & 10003 JANUARY 1, 1911</p> <p>NO. 10004 & 10005 JANUARY 1, 1911</p> <p>NO. 10006 & 10007 JANUARY 1, 1911</p> <p>NO. 10008 & 10009 JANUARY 1, 1911</p> <p>NO. 10010 & 10011 JANUARY 1, 1911</p>	<p>NO. 10012 & 10013 JANUARY 1, 1911</p> <p>NO. 10014 & 10015 JANUARY 1, 1911</p> <p>NO. 10016 & 10017 JANUARY 1, 1911</p> <p>NO. 10018 & 10019 JANUARY 1, 1911</p> <p>NO. 10020 & 10021 JANUARY 1, 1911</p> <p>NO. 10022 & 10023 JANUARY 1, 1911</p>	<p>NO. 10024 & 10025 JANUARY 1, 1911</p> <p>NO. 10026 & 10027 JANUARY 1, 1911</p> <p>NO. 10028 & 10029 JANUARY 1, 1911</p> <p>NO. 10030 & 10031 JANUARY 1, 1911</p> <p>NO. 10032 & 10033 JANUARY 1, 1911</p> <p>NO. 10034 & 10035 JANUARY 1, 1911</p>
---	---	---