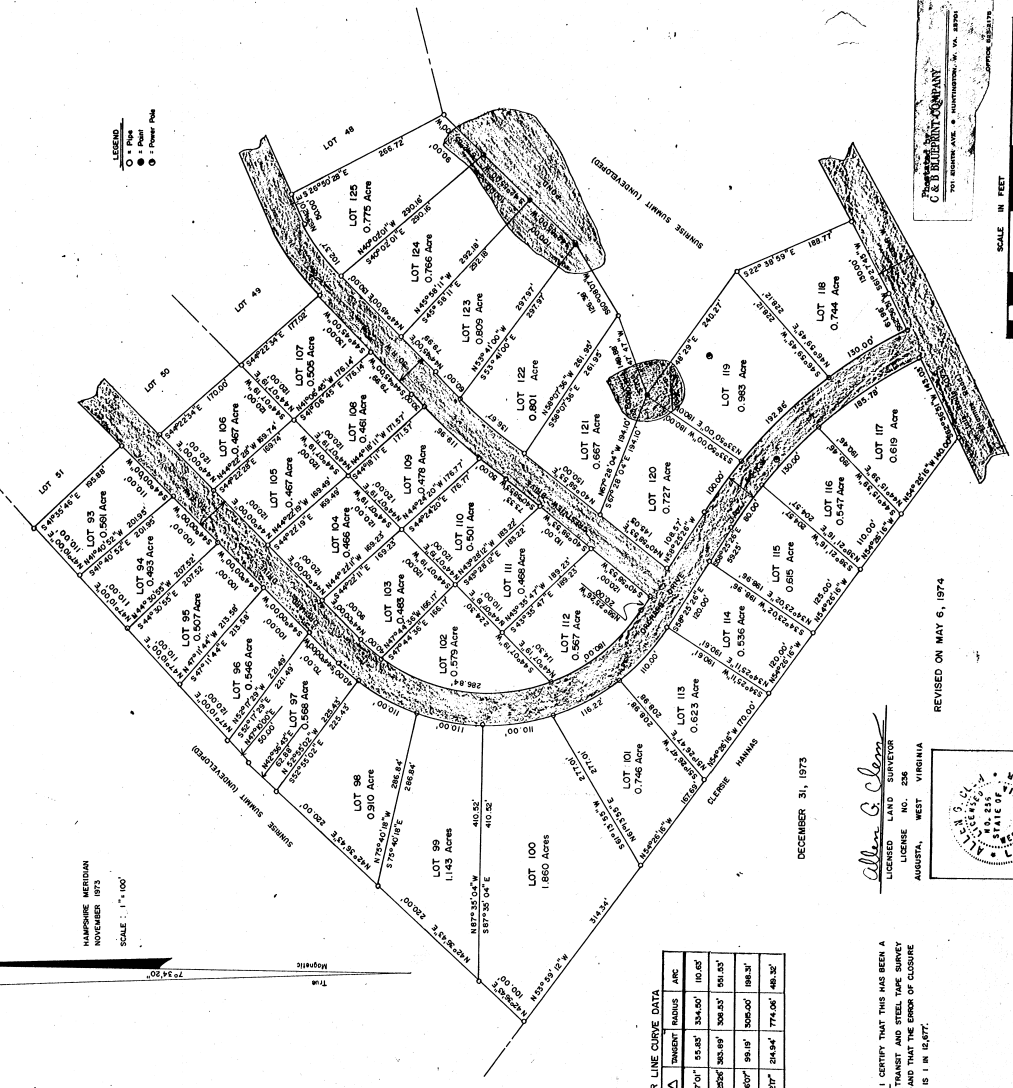
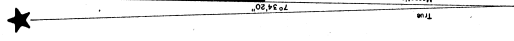


PLAT & SURVEY OF SUNRISE SUMMIT SHERMAN DISTRICT HAMPSHIRE COUNTY WEST VIRGINIA

LEGEND
○ 1 Pole
● 2 Pole
○ 3 Pole

HAMPSHIRE MERIDIAN
NOVEMBER 1973
SCALE: 1" = 100'



CURVE	Δ	TANGENT	RADIUS	ARC
D	89° 01'	53.85'	334.00'	100.82'
I	102° 25'	363.99'	308.83'	591.33'
J	09° 40'	59.19'	300.00'	198.31'
K	7° 00'	204.84'	774.00'	481.35'

DECEMBER 31, 1973

Allen G. Olsen
LICENSED LAND SURVEYOR
INC. 28
WEST VIRGINIA
AUGUSTA

NOTE: I CERTIFY THAT THIS HAS BEEN A
TRANSIT AND STEEL TAPE SURVEY
AND THAT THE ERROR OF CLOSURE
IS 1 IN 12,677.

REVISED ON MAY 6, 1974

