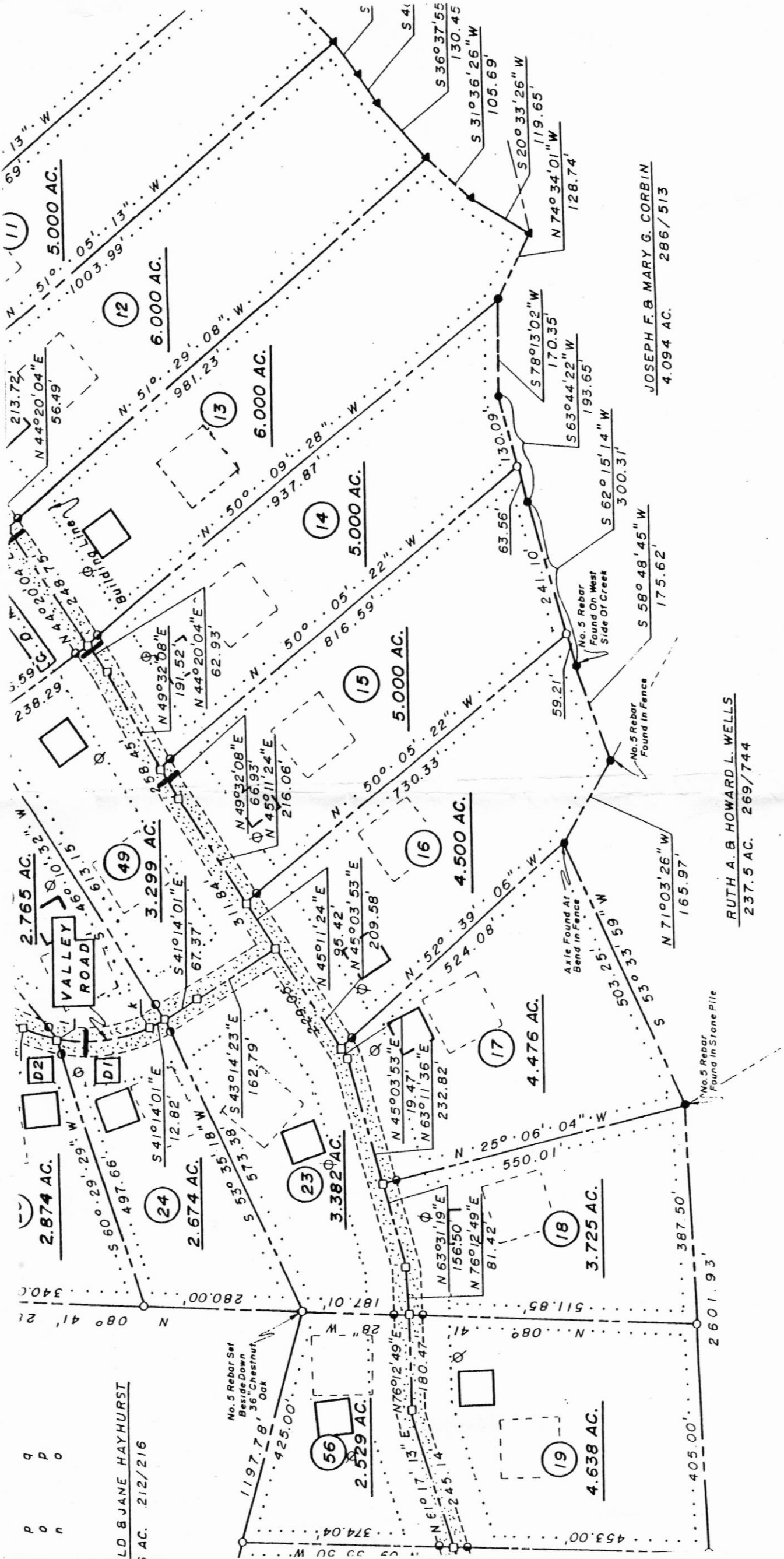


P  
O  
N

LD & JANE HAYHURST  
AC. 212/216

No. 5 Rebar Set  
Beside Down  
36" Chestnut  
Oak



JOSEPH F. & MARY G. CORBIN  
4.094 AC. 286/513

RUTH A. & HOWARD L. WELLS  
237.5 AC. 269/744

# ULTZ & ASSOCIATES, inc.

SUBDIVISION APPROVAL PERMIT :