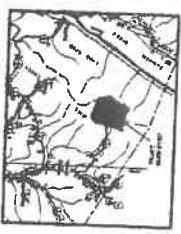


P19



ORCEC/INTEGRATED PROPERTIES, INC.
ROUTE 2, BOX 341-C
HARTINGSDALE, WEST VIRGINIA 25401
1800-374-3916

- LEGEND
- 1. FROM AN UNLINED DASH TO A SOLID LINE: CONVEYANCE OF INTEREST
 - 2. FROM A SOLID LINE TO A DASH: REVERSION OF INTEREST
 - 3. FROM A DASH TO A DASH: CONVEYANCE OF INTEREST
 - 4. FROM A DASH TO A DASH: REVERSION OF INTEREST
 - 5. FROM A DASH TO A DASH: CONVEYANCE OF INTEREST
 - 6. FROM A DASH TO A DASH: REVERSION OF INTEREST
 - 7. FROM A DASH TO A DASH: CONVEYANCE OF INTEREST
 - 8. FROM A DASH TO A DASH: REVERSION OF INTEREST
 - 9. FROM A DASH TO A DASH: CONVEYANCE OF INTEREST
 - 10. FROM A DASH TO A DASH: REVERSION OF INTEREST

FINAL PLAT OF
PHASE 1 OF DEERFIELD HIGHLANDS
LOT NOS. 28 THRU 45
121.313 TOTAL ACRES
(AREA WITHIN ROAD R/W = 6.6 ACRES)
MILL CREEK & ROMNEY DISTRICTS
HAMPSHIRE COUNTY, WEST VIRGINIA
TAX MAP 1, PART OF PARCEL J

NOTES

1. THE BOUNDARIES OF THIS PLAT AND THE ADJACENT PARCELS ARE BASED UPON THE RECORDS OF THE HAMPSHIRE COUNTY REGISTERED DEEDS AND RECORDS.

2. THE BOUNDARIES OF THIS PLAT AND THE ADJACENT PARCELS ARE BASED UPON THE RECORDS OF THE HAMPSHIRE COUNTY REGISTERED DEEDS AND RECORDS.

3. THE BOUNDARIES OF THIS PLAT AND THE ADJACENT PARCELS ARE BASED UPON THE RECORDS OF THE HAMPSHIRE COUNTY REGISTERED DEEDS AND RECORDS.

4. THE BOUNDARIES OF THIS PLAT AND THE ADJACENT PARCELS ARE BASED UPON THE RECORDS OF THE HAMPSHIRE COUNTY REGISTERED DEEDS AND RECORDS.

5. THE BOUNDARIES OF THIS PLAT AND THE ADJACENT PARCELS ARE BASED UPON THE RECORDS OF THE HAMPSHIRE COUNTY REGISTERED DEEDS AND RECORDS.

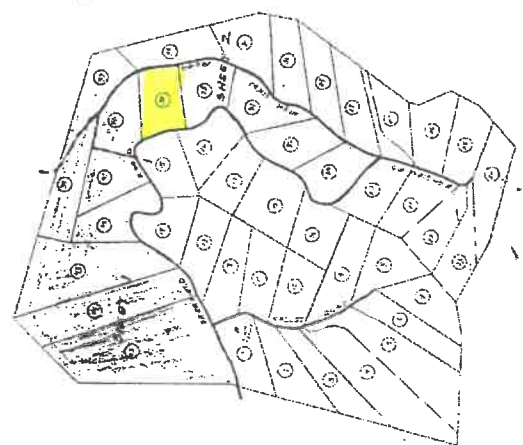
6. THE BOUNDARIES OF THIS PLAT AND THE ADJACENT PARCELS ARE BASED UPON THE RECORDS OF THE HAMPSHIRE COUNTY REGISTERED DEEDS AND RECORDS.

7. THE BOUNDARIES OF THIS PLAT AND THE ADJACENT PARCELS ARE BASED UPON THE RECORDS OF THE HAMPSHIRE COUNTY REGISTERED DEEDS AND RECORDS.

8. THE BOUNDARIES OF THIS PLAT AND THE ADJACENT PARCELS ARE BASED UPON THE RECORDS OF THE HAMPSHIRE COUNTY REGISTERED DEEDS AND RECORDS.

9. THE BOUNDARIES OF THIS PLAT AND THE ADJACENT PARCELS ARE BASED UPON THE RECORDS OF THE HAMPSHIRE COUNTY REGISTERED DEEDS AND RECORDS.

10. THE BOUNDARIES OF THIS PLAT AND THE ADJACENT PARCELS ARE BASED UPON THE RECORDS OF THE HAMPSHIRE COUNTY REGISTERED DEEDS AND RECORDS.



FOR INFORMATION

THE BOUNDARIES OF THIS PLAT AND THE ADJACENT PARCELS ARE BASED UPON THE RECORDS OF THE HAMPSHIRE COUNTY REGISTERED DEEDS AND RECORDS.

THE BOUNDARIES OF THIS PLAT AND THE ADJACENT PARCELS ARE BASED UPON THE RECORDS OF THE HAMPSHIRE COUNTY REGISTERED DEEDS AND RECORDS.

THE BOUNDARIES OF THIS PLAT AND THE ADJACENT PARCELS ARE BASED UPON THE RECORDS OF THE HAMPSHIRE COUNTY REGISTERED DEEDS AND RECORDS.

THE BOUNDARIES OF THIS PLAT AND THE ADJACENT PARCELS ARE BASED UPON THE RECORDS OF THE HAMPSHIRE COUNTY REGISTERED DEEDS AND RECORDS.

THE BOUNDARIES OF THIS PLAT AND THE ADJACENT PARCELS ARE BASED UPON THE RECORDS OF THE HAMPSHIRE COUNTY REGISTERED DEEDS AND RECORDS.

THE BOUNDARIES OF THIS PLAT AND THE ADJACENT PARCELS ARE BASED UPON THE RECORDS OF THE HAMPSHIRE COUNTY REGISTERED DEEDS AND RECORDS.

THE BOUNDARIES OF THIS PLAT AND THE ADJACENT PARCELS ARE BASED UPON THE RECORDS OF THE HAMPSHIRE COUNTY REGISTERED DEEDS AND RECORDS.

THE BOUNDARIES OF THIS PLAT AND THE ADJACENT PARCELS ARE BASED UPON THE RECORDS OF THE HAMPSHIRE COUNTY REGISTERED DEEDS AND RECORDS.

THE BOUNDARIES OF THIS PLAT AND THE ADJACENT PARCELS ARE BASED UPON THE RECORDS OF THE HAMPSHIRE COUNTY REGISTERED DEEDS AND RECORDS.

THE BOUNDARIES OF THIS PLAT AND THE ADJACENT PARCELS ARE BASED UPON THE RECORDS OF THE HAMPSHIRE COUNTY REGISTERED DEEDS AND RECORDS.

DRAWING INDEX

SHEET 1 COVER SHEET

SHEET 2 LOT LAYOUT OF LOTS 34 & 41-45

SHEET 3 LOT LAYOUT OF LOTS 28, 30, 31, 32, 33, 35-40

FOR INFORMATION

THE BOUNDARIES OF THIS PLAT AND THE ADJACENT PARCELS ARE BASED UPON THE RECORDS OF THE HAMPSHIRE COUNTY REGISTERED DEEDS AND RECORDS.

THE BOUNDARIES OF THIS PLAT AND THE ADJACENT PARCELS ARE BASED UPON THE RECORDS OF THE HAMPSHIRE COUNTY REGISTERED DEEDS AND RECORDS.

THE BOUNDARIES OF THIS PLAT AND THE ADJACENT PARCELS ARE BASED UPON THE RECORDS OF THE HAMPSHIRE COUNTY REGISTERED DEEDS AND RECORDS.

THE BOUNDARIES OF THIS PLAT AND THE ADJACENT PARCELS ARE BASED UPON THE RECORDS OF THE HAMPSHIRE COUNTY REGISTERED DEEDS AND RECORDS.

THE BOUNDARIES OF THIS PLAT AND THE ADJACENT PARCELS ARE BASED UPON THE RECORDS OF THE HAMPSHIRE COUNTY REGISTERED DEEDS AND RECORDS.

THE BOUNDARIES OF THIS PLAT AND THE ADJACENT PARCELS ARE BASED UPON THE RECORDS OF THE HAMPSHIRE COUNTY REGISTERED DEEDS AND RECORDS.

THE BOUNDARIES OF THIS PLAT AND THE ADJACENT PARCELS ARE BASED UPON THE RECORDS OF THE HAMPSHIRE COUNTY REGISTERED DEEDS AND RECORDS.

THE BOUNDARIES OF THIS PLAT AND THE ADJACENT PARCELS ARE BASED UPON THE RECORDS OF THE HAMPSHIRE COUNTY REGISTERED DEEDS AND RECORDS.

THE BOUNDARIES OF THIS PLAT AND THE ADJACENT PARCELS ARE BASED UPON THE RECORDS OF THE HAMPSHIRE COUNTY REGISTERED DEEDS AND RECORDS.

THE BOUNDARIES OF THIS PLAT AND THE ADJACENT PARCELS ARE BASED UPON THE RECORDS OF THE HAMPSHIRE COUNTY REGISTERED DEEDS AND RECORDS.

FINAL PLAT OF PHASE 1
DEERFIELD HIGHLANDS
RESERVED, INC.
ROUTE 2, BOX 341-C
HARTINGSDALE, WEST VIRGINIA 25401
1800-374-3916



[Signature]
Surveyor

[Signature]
Reserve, Inc.

[Signature]
Reserve, Inc.