

Mailed Hunter Co. of WV
471 B + O Overlook Rd
Hedgesville, WV 25427
2-22-06

PLAT OF SURVEY FOR WV HUNTER, LLC
 Quail Creek Farm
 471 B + O Overlook Rd., Hedgesville, WV 25427
 304-262-2770
Ashby Forest
 Lots 1-30
 1.5 Miles North of Springfield
 Springfield Dist., Hampshire Co., WV
 Being part of the land from MeadWestcoast Corp. to WV Hunter, LLC
 known as the Bichiger Tract With Reference to Deed Book 438 Page 638
 Dated September 23, 2004 and the land from Norma J. Shanholzer
 to WV Hunter, LLC in Deed Book 450 Page 4 and the land from
 Cosner and Sumo to WV Hunter, LLC in Deed Book 449 Page 436.
 889.66 Acres in Lots & 20.15 Acres in Road R/W
 Part of Tax Map 25 Parcels 7 and 10 and Tax Map 16 Parcel 61
 889.84 Total Acres
 Surveyed December 2005
 L & W Enterprises, Inc.
 14 South Grove Street
 Fehersburg, WV 25745-4218
 Date: Dec. 28, 2005
 Scale: 1" = 300'
 Drawn By: CEK

LEGEND

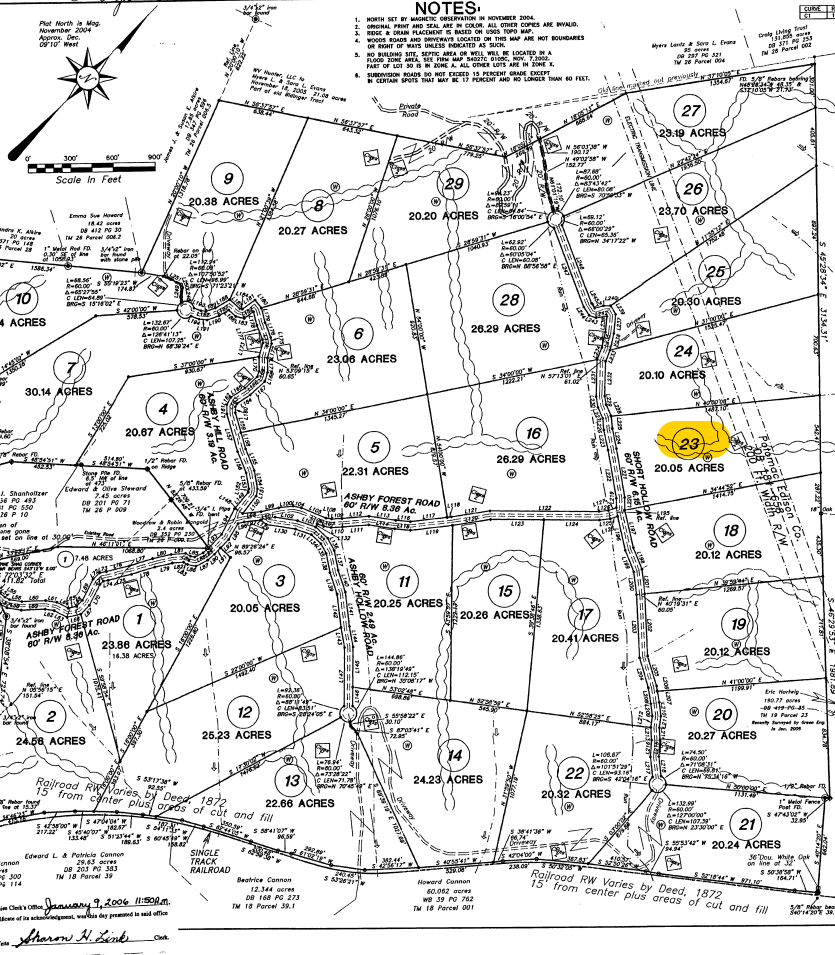
- PROPERTY LINE, EXTERIOR BOUNDARY
- PROPERTY LINE, DIVISIONS
- PROPERTY OF ROAD
- PROPERTY LINE
- ROAD RIGHT-OF-WAY
- RAILROAD R/W
- STATE R/W R/W
- DIVISION ROAD
- EDGE OF PAYMENT
- TRAIL
- APPROXIMATE DRAIN
- POWER LINE
- APPROXIMATE RIDGE LINES
- ADVANCED PROPERTY LINES
- PROPOSED LINE
- EXISTING LINE
- STONE LINE
- TRIPLES AS CORNER NOTED ON PLAN
- AS CORNER OR REFERENCE TO CORNER
- BEAR POINT
- POINT OR CORNER NO MARKER SET
- IRON PIPE OR IRON ROD FOUND
- BEAR FOUND AS CORNER
- STONE PIPE FOUND
- UTILITY POLE
- PROPOSED WELL LOCATION
- PROPOSED SERVICE SITE LOCATION
- LOT OR TRACT NUMBER

CERTIFY THAT THE INFORMATION CONTAINED ON THIS PLAT IS, TO THE BEST OF MY KNOWLEDGE, CORRECT, AND IN ACCORDANCE WITH THE LAWS OF THIS STATE GOVERNING THE PROFESSION OF LAND SURVEYING.

Lester E. Kessler
 L.S. License No. 115
 Curtis E. Kessler, P.S. No. 319
 FOR L & W ENTERPRISES, INC.

STATE OF WEST VIRGINIA, Hampshire County Commission Clerk's Office
 January 9, 2006 11:50 a.m.
 and submitted to record.

Sharon H. Lark
 Clerk



ROAD R/W CALLS

LINE	BEARING	DISTANCE	AREA	AREA
R1	S 89°58'12" W	12.25	1.24	1.24
R2	S 89°58'12" W	12.25	1.24	1.24
R3	S 89°58'12" W	12.25	1.24	1.24
R4	S 89°58'12" W	12.25	1.24	1.24
R5	S 89°58'12" W	12.25	1.24	1.24
R6	S 89°58'12" W	12.25	1.24	1.24
R7	S 89°58'12" W	12.25	1.24	1.24
R8	S 89°58'12" W	12.25	1.24	1.24
R9	S 89°58'12" W	12.25	1.24	1.24
R10	S 89°58'12" W	12.25	1.24	1.24
R11	S 89°58'12" W	12.25	1.24	1.24
R12	S 89°58'12" W	12.25	1.24	1.24
R13	S 89°58'12" W	12.25	1.24	1.24
R14	S 89°58'12" W	12.25	1.24	1.24
R15	S 89°58'12" W	12.25	1.24	1.24
R16	S 89°58'12" W	12.25	1.24	1.24
R17	S 89°58'12" W	12.25	1.24	1.24
R18	S 89°58'12" W	12.25	1.24	1.24
R19	S 89°58'12" W	12.25	1.24	1.24
R20	S 89°58'12" W	12.25	1.24	1.24
R21	S 89°58'12" W	12.25	1.24	1.24
R22	S 89°58'12" W	12.25	1.24	1.24
R23	S 89°58'12" W	12.25	1.24	1.24
R24	S 89°58'12" W	12.25	1.24	1.24
R25	S 89°58'12" W	12.25	1.24	1.24
R26	S 89°58'12" W	12.25	1.24	1.24
R27	S 89°58'12" W	12.25	1.24	1.24
R28	S 89°58'12" W	12.25	1.24	1.24
R29	S 89°58'12" W	12.25	1.24	1.24
R30	S 89°58'12" W	12.25	1.24	1.24