

SUGAR RUN - PHASE I
 PLAT NO. D93-047
 MAP BOOK 7, PG. 75-76

36 - 37	BPG-43	S 61° 47' 45" E	27.47
38 - 39	BPG-44	S 49° 57' 48" E	76.19
39 - 40	BPG-45	S 42° 20' 44" N	66.29
40 - 41	BPG-46	S 42° 20' 44" N	183.66
41 - 42	BPG-47	S 21° 53' 12" E	174.98
42 - 43	BPG-48	S 21° 53' 12" E	28.41
43 - 44	BPG-49	N 69° 28' 58" E	47.01
44 - 45	BPG-50	N 67° 35' 02" E	44.84
45 - 46	BPG-51	S 00° 12' 18" E	70.00
	BPG-52	S 00° 12' 18" E	66.54
	BPG-53	S 00° 12' 18" E	160.00
	BPG-54	S 90° 27' 08" E	20.00
3 - 47	BPG-55	S 60° 47' 53" E	45.83
47 - 48	BPG-56	N 60° 20' 59" E	84.81
48 - 49	BPG-57	N 61° 44' 47" E	96.41
49 - 50	BPG-58	N 58° 42' 02" E	87.81
50 - 51	BPG-59	N 50° 58' 15" E	24.83
51 - 52	BPG-60	N 50° 42' 36" E	133.30
52 - 53	BPG-61	N 54° 48' 13" E	70.89
53 - 54	BPG-62	N 80° 17' 20" E	82.98
54 - 55	BPG-63	N 84° 28' 42" E	84.82
55 - 56	BPG-64	N 87° 48' 18" E	88.59
56 - 43	BPG-65	N 69° 28' 58" E	83.61
	BPG-66	S 77° 08' 08" N	86.23
	BPG-67	N 85° 27' 08" N	108.27
	BPG-68	N 84° 53' 59" N	132.66
	BPG-69	N 49° 12' 04" N	28.32
	BPG-70	S 71° 09' 28" N	28.32
	BPG-71	N 85° 23' 33" N	161.03
	BPG-72	N 41° 04' 01" N	108.24
	BPG-73	N 41° 04' 01" N	122.26
	BPG-74	N 29° 58' 34" N	68.74
	BPG-75	N 21° 09' 43" N	102.48
	BPG-76	N 28° 53' 28" N	118.48
	BPG-77	N 28° 53' 28" N	308.22
	BPG-78	N 40° 20' 13" N	68.00
	BPG-79	N 08° 44' 22" N	68.12
	BPG-80	N 03° 05' 14" E	82.20
	BPG-81	N 64° 28' 14" N	124.27
58 - 59	BPG-82	N 48° 58' 53" N	81.88
59 - 60	BPG-83	N 07° 29' 19" E	88.00
60 - 61	BPG-84	S 11° 58' 54" E	28.00
61 - 62	BPG-85	S 11° 58' 54" E	208.60
	BPG-86	S 34° 01' 48" N	181.06
	BPG-87	N 48° 12' 04" N	218.43
	BPG-88	N 63° 27' 38" E	97.12
	BPG-89	N 47° 56' 04" E	66.37
	BPG-90	S 40° 05' 33" E	111.28
	BPG-91	S 81° 38' 03" N	87.78
	BPG-92	N 58° 48' 38" N	108.85
	BPG-93	N 68° 46' 41" N	312.67
	BPG-94	N 68° 46' 41" N	180.00
	BPG-95	N 65° 48' 41" N	186.04
	BPG-96	N 33° 50' 03" N	280.00
59 - 61	BPG-97	N 07° 29' 19" E	41.77
37 - 38	BPG-98	S 61° 47' 45" E	36.00

19-F

SUGAR RUN - PHASE II

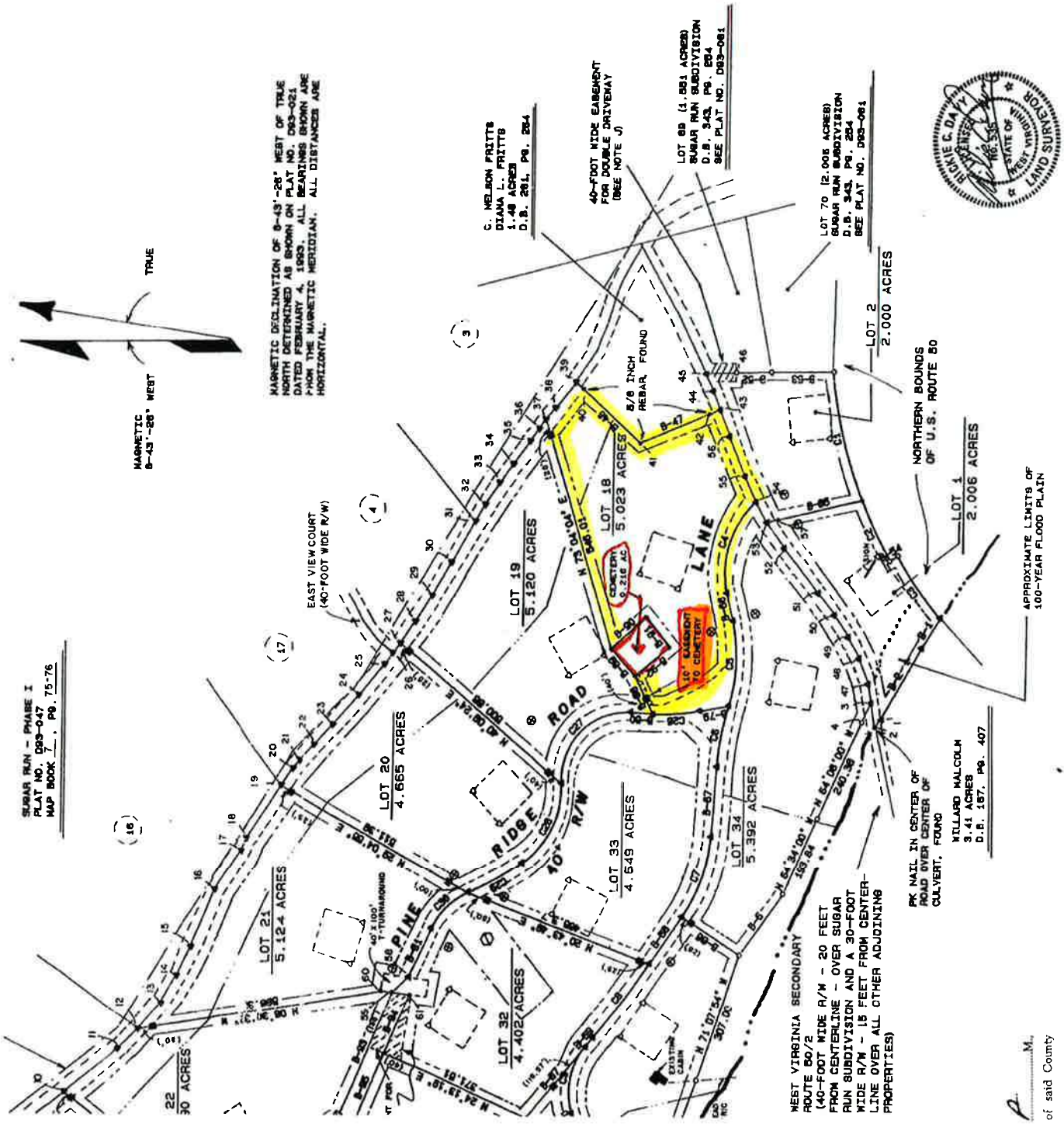
R & S SERVICES, INC.

RICKIE C. DAVY, L.L.S. NO. 535
 CAPON BRIDGE, WV 26711 856-3165

TITLE: BEING THE DIVISION OF THE REMAINDER OF AN ORIGINAL 488.782 ACRE TRACT OF LAND NOW OWNED BY EASTERN PEATRY IMPORTERS, INC. SEE D.B. 343, PG. 284 & MAP BOOK 7, PG. 48.

Scale 1"=200 feet
 DATE 09/28/1983

JOB NO. 08-482
 Sheet 2 of 3 Sheets



MAGNETIC
 8-43-28° WEST

TRUE

MAGNETIC DECLINATION OF 8-43'-28" WEST OF TRUE NORTH DETERMINED AS SHOWN ON PLAT NO. D93-047 DATED FEBRUARY 4, 1983. ALL BEARINGS SHOWN ARE FROM THE MAGNETIC MERIDIAN. ALL DISTANCES ARE HORIZONTAL.

EAST VIEW COURT
 (40'-FOOT WIDE R/W)

C. NELSON PRITTS
 DIANA L. PRITTS
 1.48 ACRES
 D.B. 281, PG. 264

40'-FOOT WIDE EASEMENT
 FOR DOUBLE DRIVEWAY
 (SEE NOTE J)

LOT 89 (1.081 ACRES)
 SUGAR RUN SUBDIVISION
 D.B. 343, PG. 284
 SEE PLAT NO. D93-081

LOT 70 (2.006 ACRES)
 SUGAR RUN SUBDIVISION
 D.B. 343, PG. 284
 SEE PLAT NO. D93-081



LOT 2
 2.000 ACRES

NORTHERN BOUNDS
 OF U.S. ROUTE 50

LOT 1
 2.006 ACRES

APPROXIMATE LIMITS OF
 100-YEAR FLOOD PLAIN

WEST VIRGINIA SECONDARY
 ROUTE 60/2
 (40'-FOOT WIDE R/W - 20 FEET
 FROM CENTERLINE - OVER SUBAR
 RUN SUBDIVISION AND A 30'-FOOT
 WIDE R/W - 15 FEET FROM CENTER-
 LINE OVER ALL OTHER ADJOINING
 PROPERTIES)

PK. NATL. IN CENTER OF
 ROAD OVER CENTER OF
 CULVERT, FOUND
 WILLARD MALCOLM
 3.41 ACRES
 D.B. 187, PG. 407

By: W. Vasili
 of said County

Civil
 W. Vasili

Hampshire Parcel Viewer



Hampshire Parcel Viewer

