

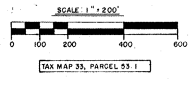
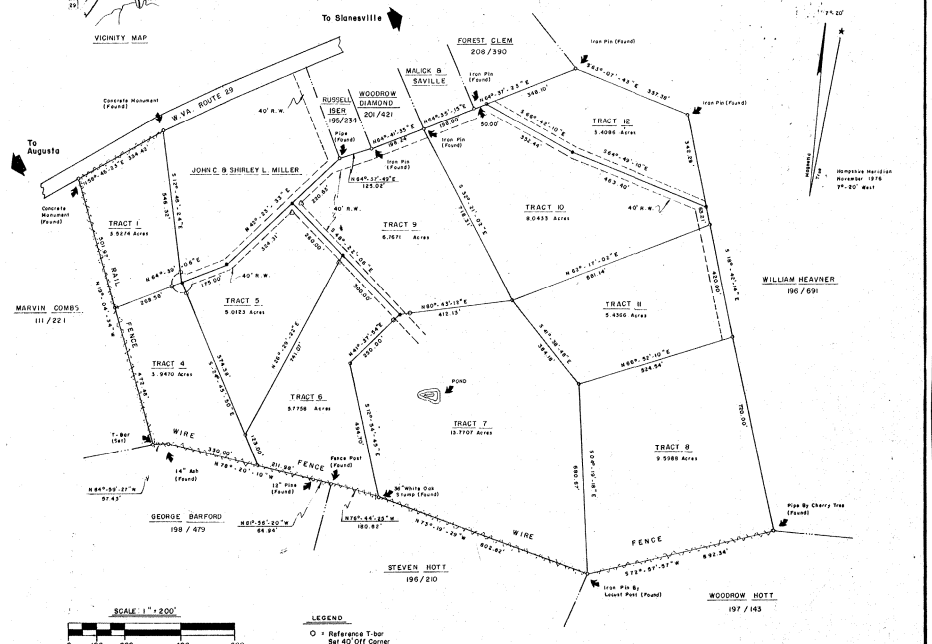
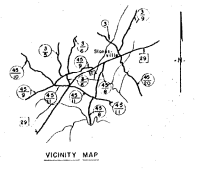
Del: Cookman & Hinkle 6-29-77

Resurveyed May 24, 1977 @ 10:23 A.M.

P.109

WE REPAIR ALL MAKES OF SURVEYING INSTRUMENTS
REPAIRS TO BE MADE BY SURVEYORS AND ENGINEERS
SUPPLIES AND EQUIPMENT
PHOTOGRAPHY
C & B BLUEPRINT CO.
701 EIGHTH AVE. #1000, WASHINGTON, VA. 22201

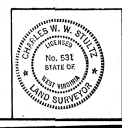
Resurvey Of
SPRING MEADOWS SUBDIVISION
Gore District, Hampshire County, West Virginia
Reference Deed Book 197, Page 238
Contains 65,2876 Acres



TAX MAP 33, PARCEL 53.1

- LEGEND**
- Reference T-bar Set 40' Off Corner On Line
 - △ Reference T-bar Set 50' Off Corner On Line
 - T-bar (Set)
 - Nail Set In Apparent C of Road

NOTE: This Tract Of Land Was Resurveyed According To A Map Of Survey Made By Allen G. Cheny, L.S. Dated March 22, 1972.
REVISED MAY 7, 1977



STULTZ & ASSOCIATES, INC.
Engineers - Planners - Surveyors
Romey, West Virginia - 26757

File No.	88	Client	Hampshire Heritage Realty
Surveyed By	B. Stan Ondorff	Date	4/2-15/77
Drawn By	B.A. Rickman	Date	4/15/77
APPROVED:	<i>Charles W. W. Stultz</i>		
Date	5-16-77	West Virginia Lic. No.	531