

Plat of Survey of
TAYLOR'S ACRES
 Mill Creek District Hampshire County
 West Virginia

WE REPAIR ALL MAKES OF SURVEYING INSTRUMENTS
 REPRODUCTIONS - ARCHITECTS' AND ENGINEERS'
 SUPPLIES AND EQUIPMENT
 FICOSTATED BY
C & B BLUEPRINT CO.
 701 EIGHTH AVE. • HUNTINGTON, W. VA. 25701
 OFFICE 525-2125

Reference: Deed Book 212 Page 199
 Tax Map 9 Parcels 2 through 8
 Total Area: 101.032 Acres
 Surveyed for: McBride Investments Inc.
 Tracts 8 through 11 revised July 1, 1976

Scale: 1" = 200'



NOTE: Bearings on this map are magnetic
 Compass Declination: 1° 13' West
 May 1975 Hampshire Meridian
 Romney, W. Va.

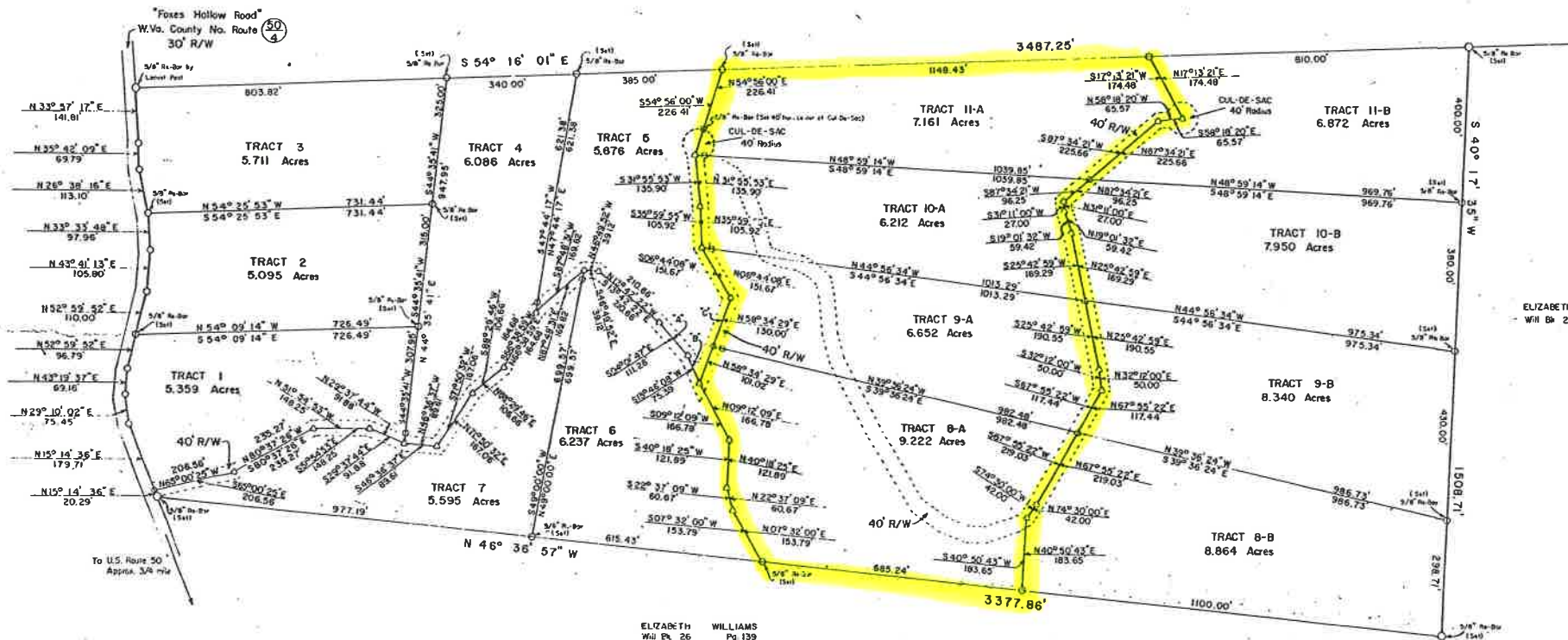
NOTE: All Property Lines represented on this map
 are marked and painted where they pass
 through wooded areas.

STANLEY G. KELLER
 DLR 204 Pg 167

Line "A"	N04°01'47"W	111.26
Line "B"	N13°46'08"E	75.39
Line "C"	S54°34'29"W	231.02

LEGEND

- indicates a boundary point in § 1999
- indicates a boundary point in R/W of Route 50A
- indicates a 5/8" No. Bar set 25' from E of road except where noted.



ELIZABETH WILLIAMS
 WVA Pl. 26 Pg. 139

ELIZABETH WILLIAMS
 WVA Pl. 26 Pg. 139

Survey completed August 14, 1975
 EW ENTERPRISE LAND SURVEYING
 Augusta, W. Va.

Frank A. Whitacre
 FRANK A. WHITACRE
 License No. 506
 Map No. NE75-045B

