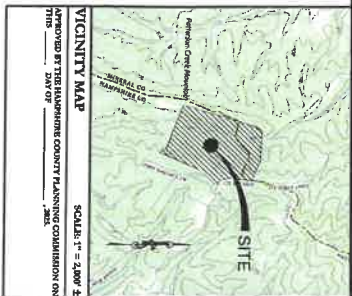
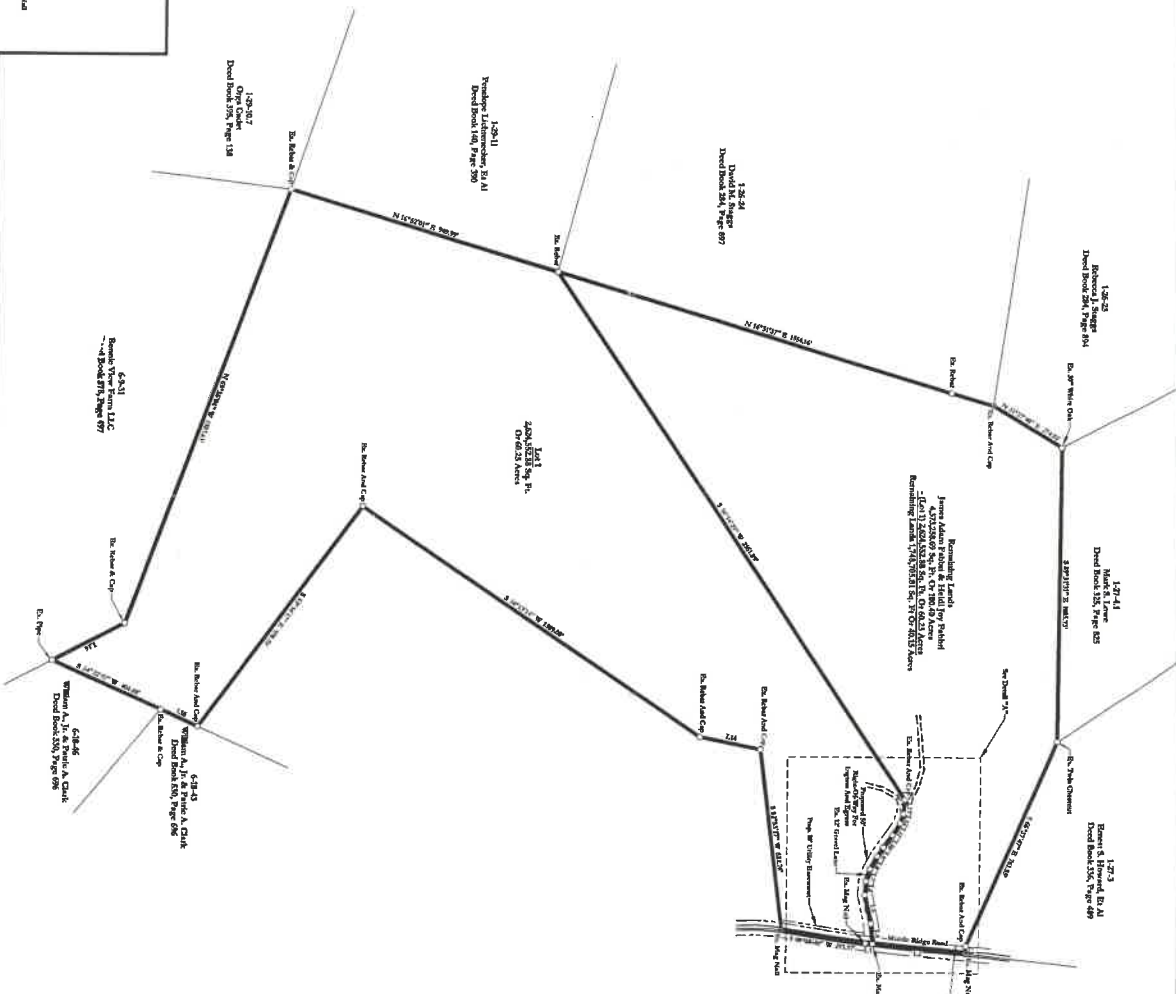
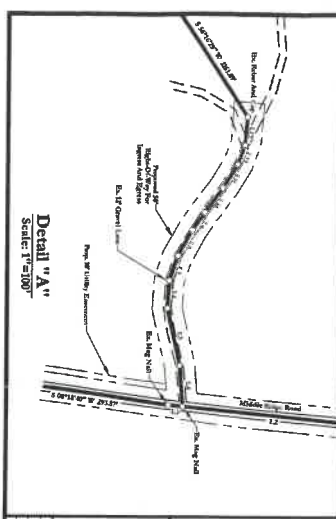


- LEGEND**
- ① F.F. Fabbri & Co., Inc.
 - ② All lines in red are in permanent (See Map 7-10-10)
 - Bx Existing
 - Prop Proposed
 - Utility Pole



LINE	BEARING	DISTANCE
L1	N 69°00'00" W	218.94
L2	S 08°40'34" W	314.46
L3	S 88°40'34" W	24.54
L4	S 88°27'00" W	69.40
L5	S 77°30'46" W	99.80
L6	N 66°19'05" W	47.20
L7	N 72°02'57" W	43.88
L8	N 61°17'48" W	49.45
L9	N 65°40'39" W	37.10
L10	N 83°24'54" W	22.52
L11	N 88°47'30" W	34.41
L12	N 69°47'30" W	48.29
L13	N 88°11'41" W	210.90
L14	S 14°23'41" W	138.03
L15	S 24°22'17" W	138.03
L16	N 27°38'47" W	275.22



- NOTES**
1. ALL INFORMATION CONTAINED HEREIN IS THE PROPERTY OF THE SURVEYOR. OWNERS REFER TO SUBDIVISION 107
 2. THE SURVEYOR HAS CONDUCTED A VISUAL INSPECTION OF THE LANDS SHOWN AND HAS FOUND THAT THE INFORMATION CONTAINED HEREIN IS CORRECT AND ACCURATE.
 3. THE SURVEYOR HAS CONDUCTED A VISUAL INSPECTION OF THE LANDS SHOWN AND HAS FOUND THAT THE INFORMATION CONTAINED HEREIN IS CORRECT AND ACCURATE.
 4. THE SURVEYOR HAS CONDUCTED A VISUAL INSPECTION OF THE LANDS SHOWN AND HAS FOUND THAT THE INFORMATION CONTAINED HEREIN IS CORRECT AND ACCURATE.
 5. THE SURVEYOR HAS CONDUCTED A VISUAL INSPECTION OF THE LANDS SHOWN AND HAS FOUND THAT THE INFORMATION CONTAINED HEREIN IS CORRECT AND ACCURATE.
 6. THE SURVEYOR HAS CONDUCTED A VISUAL INSPECTION OF THE LANDS SHOWN AND HAS FOUND THAT THE INFORMATION CONTAINED HEREIN IS CORRECT AND ACCURATE.
 7. THE SURVEYOR HAS CONDUCTED A VISUAL INSPECTION OF THE LANDS SHOWN AND HAS FOUND THAT THE INFORMATION CONTAINED HEREIN IS CORRECT AND ACCURATE.
 8. THE SURVEYOR HAS CONDUCTED A VISUAL INSPECTION OF THE LANDS SHOWN AND HAS FOUND THAT THE INFORMATION CONTAINED HEREIN IS CORRECT AND ACCURATE.
 9. THE SURVEYOR HAS CONDUCTED A VISUAL INSPECTION OF THE LANDS SHOWN AND HAS FOUND THAT THE INFORMATION CONTAINED HEREIN IS CORRECT AND ACCURATE.
 10. THE SURVEYOR HAS CONDUCTED A VISUAL INSPECTION OF THE LANDS SHOWN AND HAS FOUND THAT THE INFORMATION CONTAINED HEREIN IS CORRECT AND ACCURATE.

Unapproved Copy

**DRAFT SUBDIVISION PLAT
OF LANDS OF
JAMES ADAM FABRI
&
HEIDI JOY FABRI**

CONSULTANTS
A to Z
ard
S
ervices, LLC
403 LIVE SUITE 100
McCombsburg, PA 17233
PH: 717.496.3425
www.a2zsurveying.com

NO.	DATE	BY	REVISION
1	6/20/2007	JAF	INITIAL DESIGN
2	7/20/2007	JAF	REVISED DESIGN
3	8/20/2007	JAF	FINAL DESIGN